

**TECNOFLOOR®**

INDUSTRIA CHIMICA

PAVIMENTI RESILIENTI A BASSO PESO SPECIFICO

**FLOORDESIGN COLLECTION**

COLLECTION N°

**3**

MADE IN ITALY





## INTRODUZIONE

La prima collezione della FLOORDESIGN® nasce nel 1970 disegnata da Architetti e Stilisti italiani di fama internazionale.

Da allora ad oggi si è arricchita di molti disegni dai differenti stili, che rappresentano le tendenze dei vari periodi e testimoniano l'internazionalità della collezione.

Per non rinunciare al piacere di offrire la più vasta gamma in assoluto di disegni (182) e varianti colore (1300), abbiamo pensato, per ragioni di economicità produttive, di suddividerli come segue:

Catalogo	Tipo/ sistema di stampa	Numero colori per disegno	Numero disegni	Minimo d'ordine
Coll. nr. 1	Chimico/cilindri	2	40	100 mq
Coll. nr. 2	Chimico/ computerizzata	4 / 8	37	100 mq
Coll. nr. 3	Chimico/cilindri	3 / 5	45	400 mq
Coll. nr. 4	Chimico/cilindri	6 / 8	60	800 mq



## INTRODUCTION

The first FLOORDESIGN® collection was born in 1970 designed by Italian Architects and Designers of worldwide fame.

Since then on it was enriched with many designs of different styles, which represent the trends of several times and testify the internationality of the collection.

In order to not renounce to the pleasure of offering the absolutely widest range of designs (182) and colours (1300), we thought to divide them as follows, due to production economy:

Catalogue	Type / print system	Colours number per design	Designs number	Minimum order
Coll. nr. 1	Chemical/cylinders	2	40	100 s. qm
Coll. nr. 2	Chemical/ computerized	4 / 8	37	100 s. qm
Coll. nr. 3	Chemical/cylinders	3 / 5	45	400 s. qm
Coll. nr. 4	Chemical/cylinders	6 / 8	60	800 s. qm

## COLLECTION N° 1

## FLOREAL

LEAVES  
TULIPANI

## CLASSIC

ABACO  
BREEZE  
CORALLO  
DERBY  
GENTLEMAN  
HONEYCOMB  
HOTEL - CORSIA  
IMPERIAL  
ISIDORO  
JUMBO  
KING  
LORD  
PALACE  
PALLE  
PRINCE  
SMERALDO  
SQUARE  
STAR  
VIGA  
ZAFFIRO

## GEOMETRIC

ASTOR  
EXCELSIOR  
SKY

## RETRO

ARABELLA  
GIOIA 1  
GRAFFIO  
MOSAIC  
NIRVANA  
STRUCTURE

## IMITATION

ACCORD  
AGASSIN  
DEJÉ  
MAJESTIC  
ROYAL  
SIAM  
TWIST  
VIENNA  
YLTA

## COLLECTION N° 2

## FLOREAL

ALLEGRIA  
ARMONIA  
ARMONIA FLO  
FELICITÀ  
FELICITÀ BIG  
FELICITÀ BORDURE  
PRELUDIO  
REGALE  
SIMPATIA  
SINFONIA

## CLASSIC

CAREZZA  
DOLCEZZA  
DOLCEZZA BIG  
DOLCEZZA BORDURE  
EMOZIONE  
IMMENSITÀ  
IMMENSITÀ BORDURE  
MERAVIGLIA  
MERAVIGLIA BORDURE  
ROMANTICA  
SONETTO

## GEOMETRIC

BENESSERE  
GIOCO  
INTENSITÀ  
INTIMITÀ  
SAGGEZZA  
SAPIENZA  
SILENZIO 1

## RETRO

ATTRAZIONE  
CONCERTO  
EBBREZZA  
FIEREZZA  
GIOIA 2  
MALIZIA  
RIFLESSO  
ROMANZA  
TRANQUILLITÀ

## COLLECTION N° 3

## FLOREAL

CLOVER  
FLORAL  
LAUB  
VERONA

## CLASSIC

CASINO  
DOMINIK  
DUKE  
GIOIA 3  
GAE  
GALAXY  
HILTON  
HOPE  
ISOTTA  
LASER  
MOSAICO  
MOSS  
NOBLE  
ORSINI  
PEPITA  
QUEEN  
SPIKE  
SPOT  
STRUTTURA  
TIFFANY  
WIND

## GEOMETRIC

ASTER  
COSMOS  
DIAMANTE  
FRESH  
NOVI  
RASTER 1123  
RASTER 1124  
SILENZIO 2

## RETRO

ARMONIA  
GRAZIA  
LOTUS

## IMITATION

BURMA  
CANVAS  
CHANCARD  
MONACO  
SAVOY  
STRIPED  
SUN  
TARTAN  
TRIANON

## COLLECTION N° 4

## FLOREAL

BEAUTY  
FLÉUR  
GAJETE  
HARMONY  
MELODY  
PALERMO  
PASSION  
PETAL  
RITZ  
RITZ CORSIA  
SPRING  
VITALITY

## CLASSIC

ANCONA  
BADIN  
CLASSIC  
EDEN  
GRAIN  
MARISTELLA  
METROPOLIS  
MORESCO  
PALLAS  
RAVENNA  
RIVA  
SOHO  
TUFT  
TULA  
TUNIS  
TWEED  
VENICE  
WINDSOR  
YORK

## GEOMETRIC

QUADRO  
QUASAR

## RETRO

BISS  
CAPRI  
DISCO  
FANTASY  
FLORISSA  
IRIS  
LUNA  
MESSINA  
NAPOLI  
OPTIK  
RIALTO

## IMITATION

ASCOT  
CATANIA  
DAVOS  
GRANADA  
GRANIT  
MOSAIC  
MURANO  
PERSIEN  
SALERNO  
SIENA  
SOFTWOOD  
SORRENTO  
TAORMINA  
TAVELLE DI PROVENZA  
TERRE TOSCANE  
TOLEDO



## INDICE/INDEX

### FLOREAL

Des. CLOVER	●	4 - 5
Des. FLORAL	●	6 - 7
Des. LAUB	●	8 - 9
Des. VERONA	●	10 - 11

### CLASSIC

Des. CASINO	●	12 - 13
Des. DOMINIK	●	14 - 15
Des. DUKE	●	16 - 17
Des. GIOIA 3	●	18 - 19
Des. GAE	●	20 - 21
Des. GALAXY	●	22 - 23
Des. HILTON	●	24 - 25
Des. HOPE	●	26 - 27
Des. ISOTTA	●	28 - 29
Des. LASER	●	30 - 31
Des. MOSAICO	●	32 - 33
Des. MOSS	●	34 - 35
Des. NOBLE	●	36 - 37
Des. ORSINI	●	38 - 39
Des. PEPITA	●	40 - 41
Des. QUEEN	●	42 - 43
Des. SPIKE	●	44 - 45
Des. SPOT	●	46 - 47
Des. STRUTTURA	●	48 - 49
Des. TIFFANY	●	50 - 51
Des. WIND	●	52 - 53

### GEOMETRIC


Des. ASTER	●	54 - 55
Des. COSMOS	●	56 - 57
Des. DIAMANTE	●	58 - 59
Des. FRESH	●	60 - 61
Des. NOVI	●	62 - 63
Des. PASTER 1123	●	64 - 65
Des. PASTER 1124	●	66 - 67
Des. SILENZIO 2	●	68 - 69

### RETRÒ

Des. ARMONIA	●	70 - 71
Des. GRAZIA	●	72 - 73
Des. LOTUS	●	74 - 75

### IMITATION

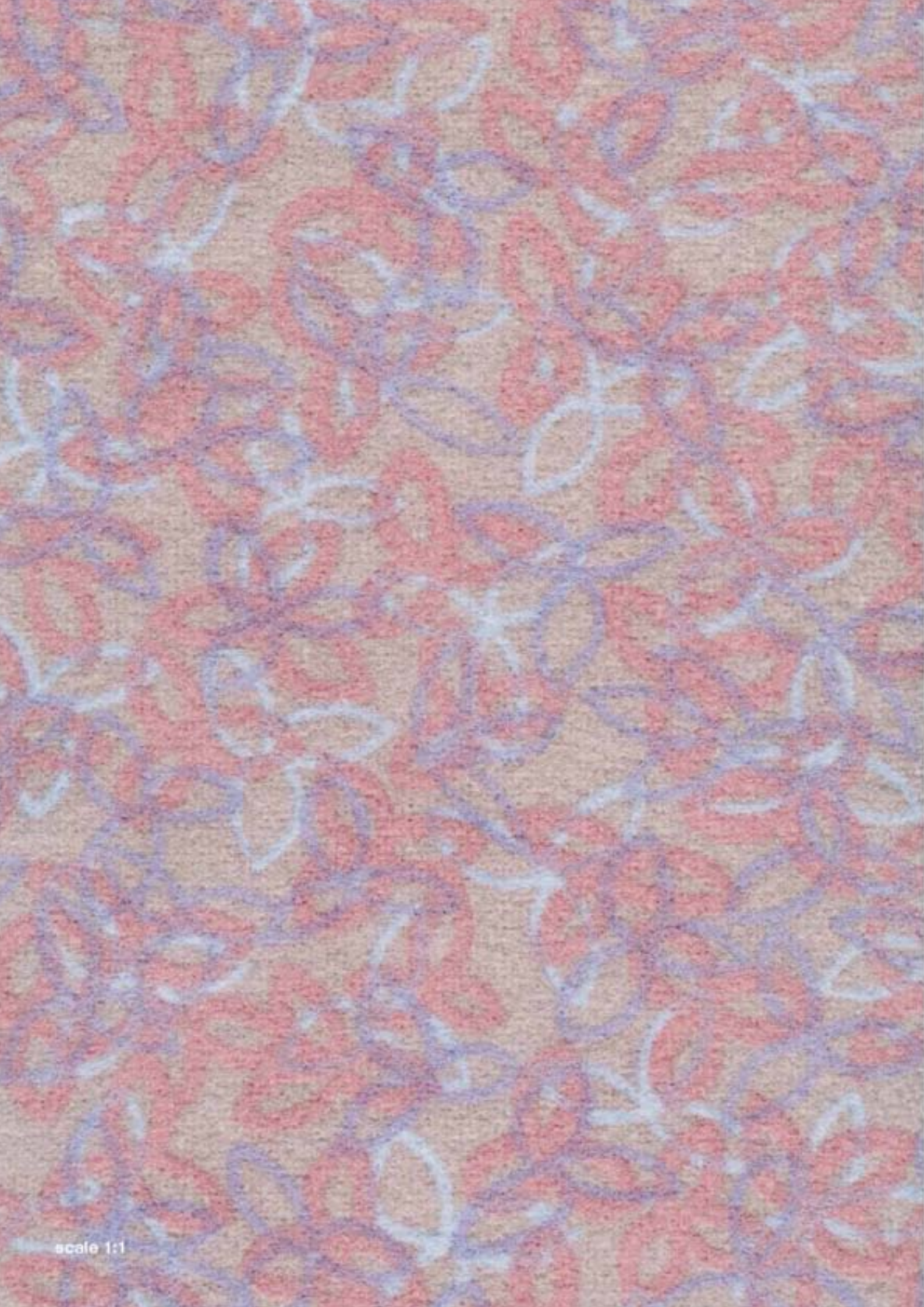
Des. BURMA	●	76 - 77
Des. CANVAS	●	78 - 79
Des. CHANCARD	●	80 - 81
Des. MONACO	●	82 - 83
Des. SAVOY	●	84 - 85
Des. STRIPED	●	86 - 87
Des. SUN	●	88 - 89
Des. TARTAN	●	90 - 91
Des. TRIANON	●	92 - 93

 Minimo d'ordine: 400 mq. +/- 5 % o solo +10%

 Minimum quantity per order: 400 mq. +/- 5 % or just +10%

 Rotolo/roll

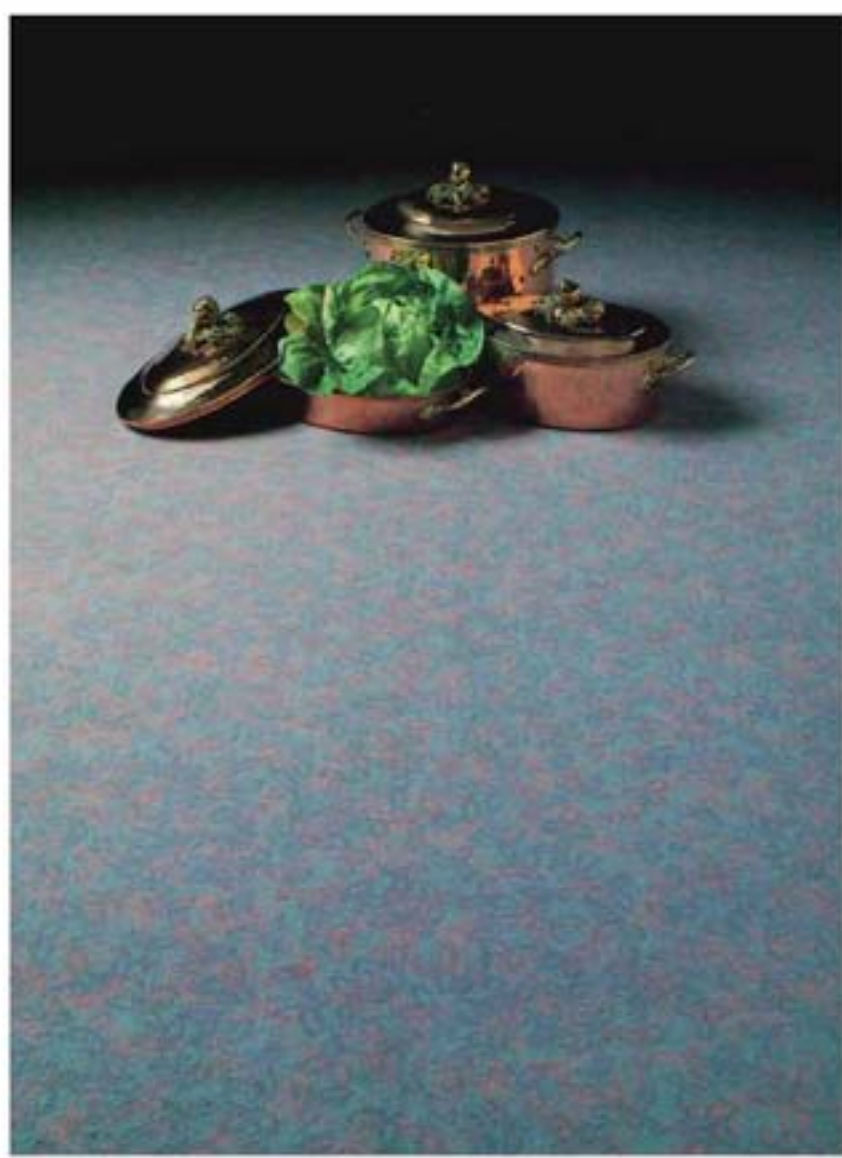




scale 1:1



*PATTERN REPEAT:*  
width cm 50 long cm 32



CL 8801



CL 8802



CL 8803



scale 1:1



# Des. FLORAL

*PATTERN REPEAT:*  
width cm 50 long cm 32



FL 9088



FL 9087



FL 9086





scale 1:0,9



*PATTERN REPEAT:*  
width cm 50 long cm 32



LA 9759



LA 9760



LA 9761





scale 1:1



# Des. VERONA

PATTERN REPEAT:  
width cm 50 long cm 64



VE 1126



VE 1127



VE 1128



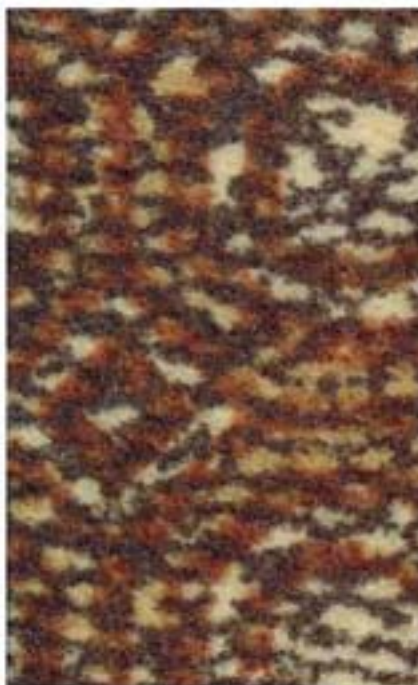


scale 1:1



# Des. CASINO

PATTERN REPEAT:  
width cm 32 long cm 25



CN 3785

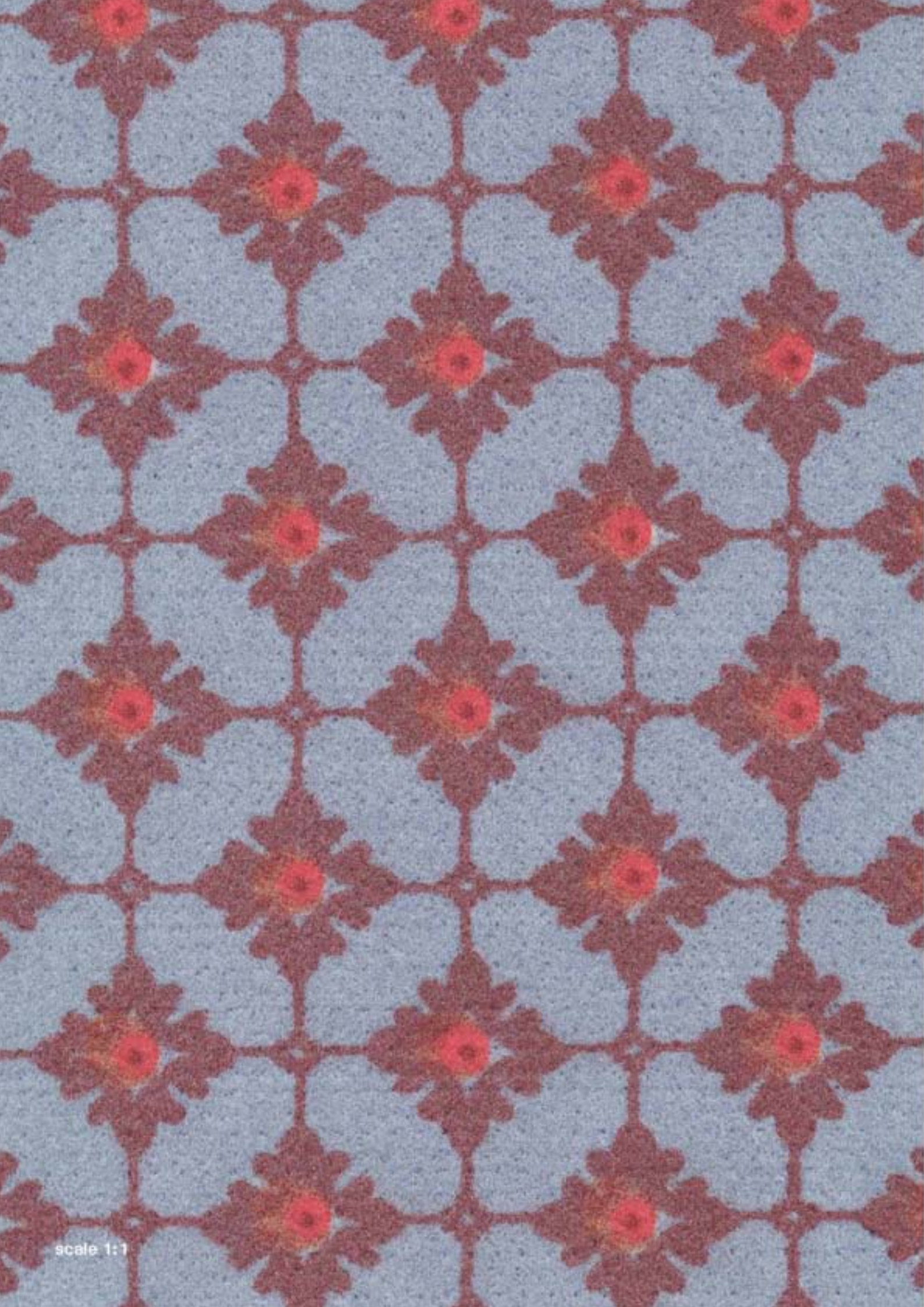


CN 3786



CN 3787





scale 1:1



# Des. DOMINIK

*PATTERN REPEAT:*  
width cm 7,1 long cm 7,4



DO 9737



DO 9738



DO 9739







*PATTERN REPEAT:*  
width cm 2 long cm 1



DK 9711



DK 9712



DK 9713



DK 9714



DK 9715







# Des. GIOIA 3

*PATTERN REPEAT:*  
width cm 1,5 long cm 1,5



EL 7601

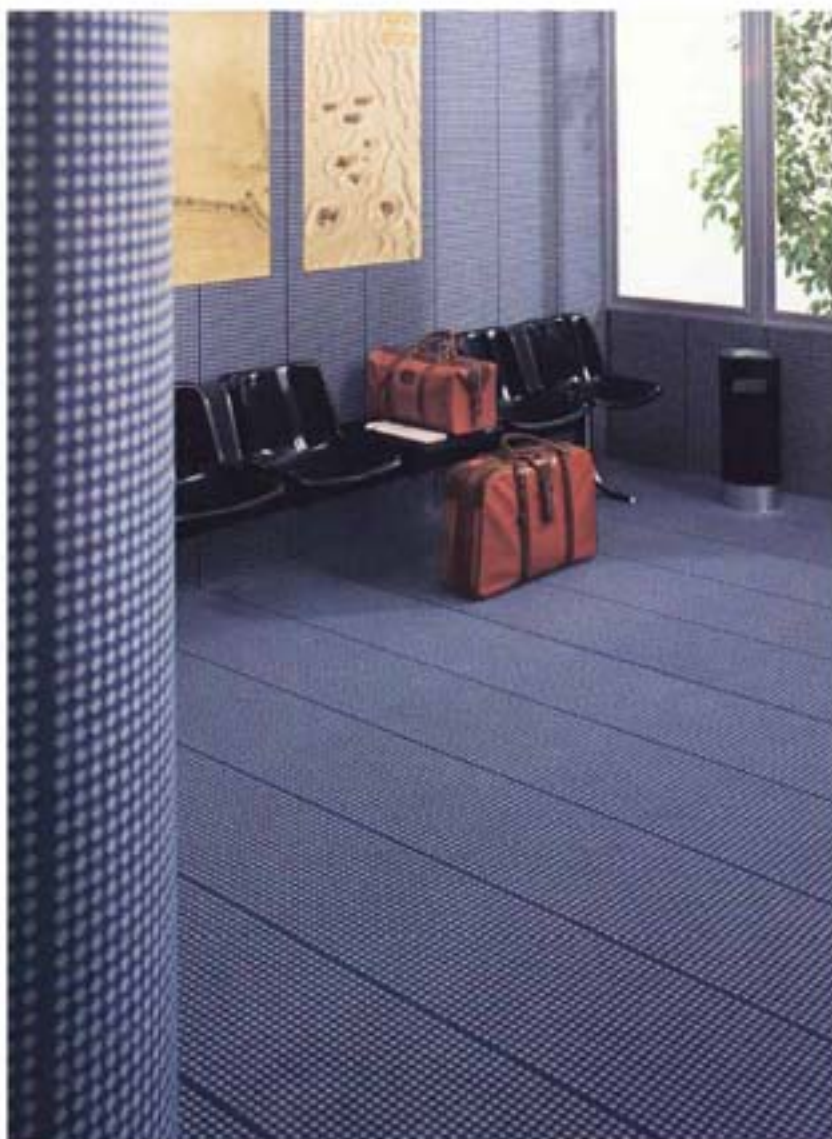




scale 1:1



PATTERN REPEAT:  
width cm 50 long cm 1,8



GA 9860



GA 9861



GA 9862



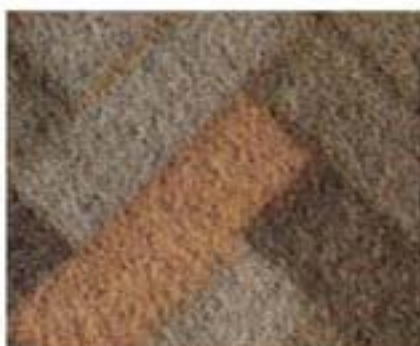
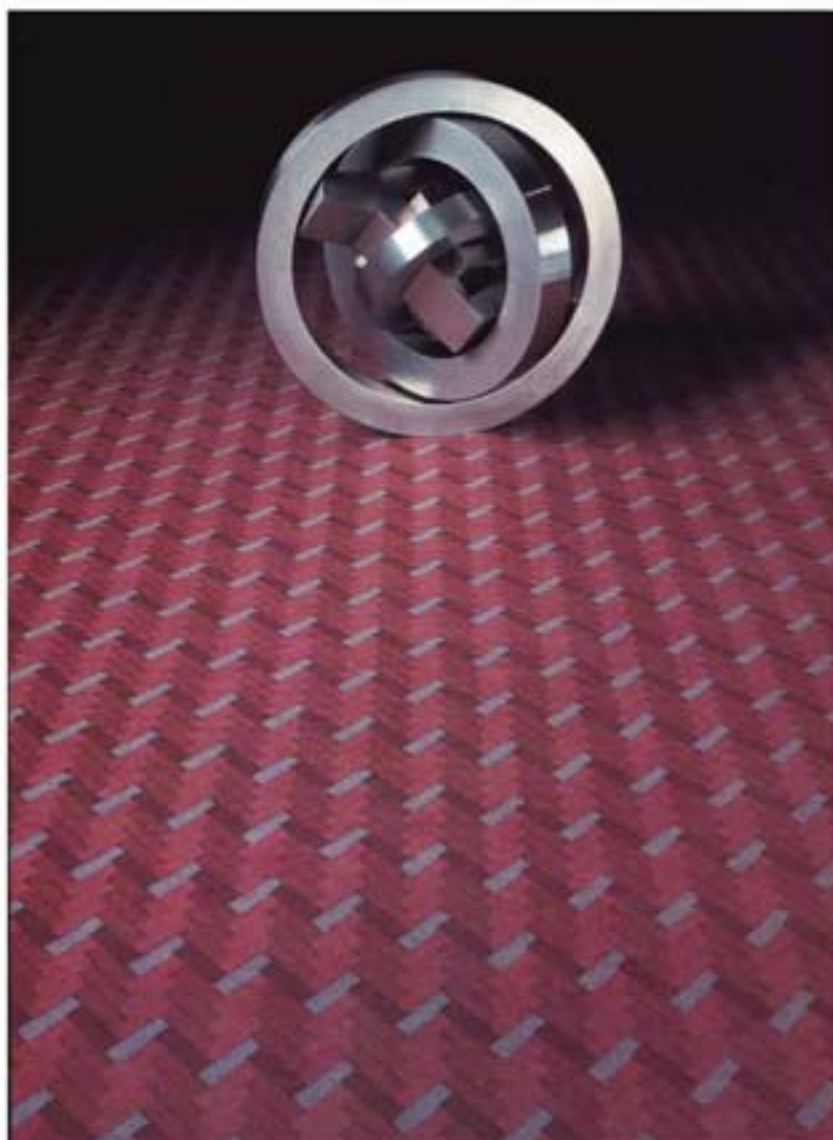


scale 1:1



# Des. GALAXY

PATTERN REPEAT:  
width cm 21,3 long cm 20,3



GL 8701



GL 8702



GL 8703



GL 8704



GL 8705



GL 8706

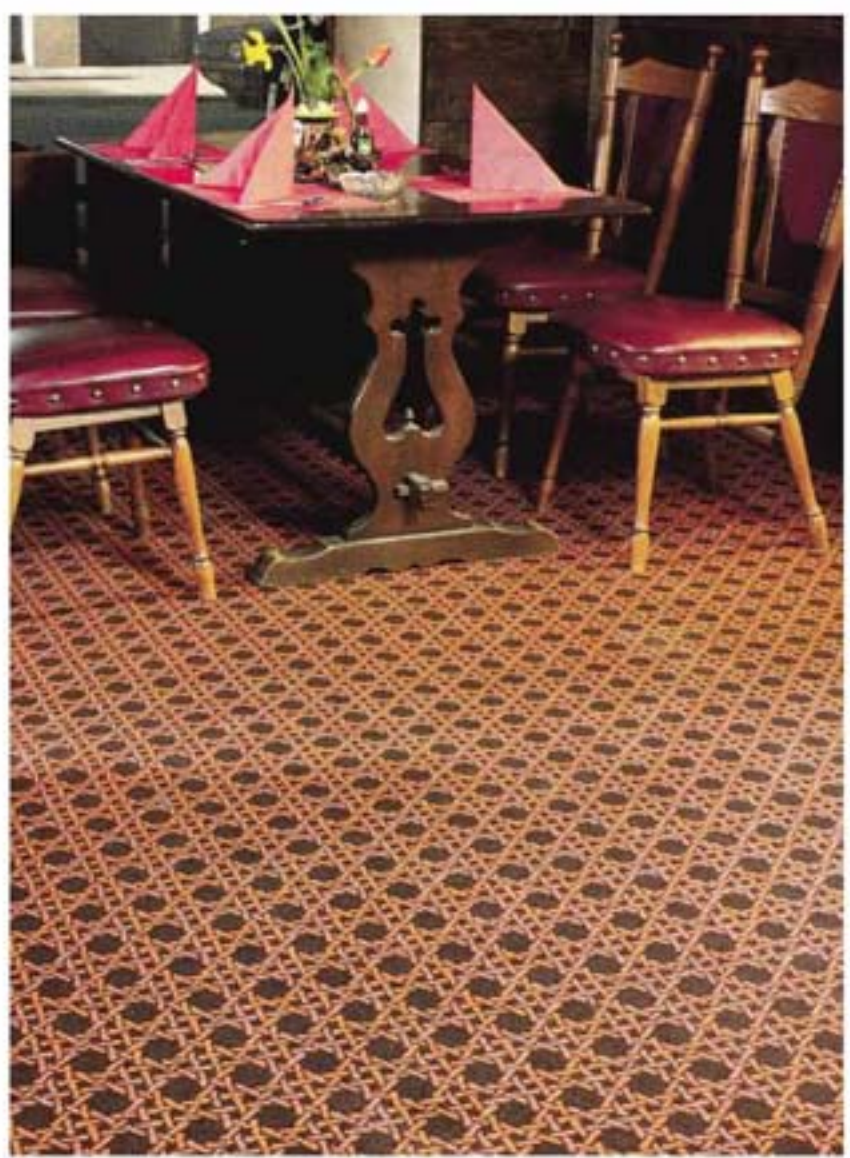




scale 1:1



*PATTERN REPEAT:*  
width cm 16 long cm 16,6



HI 4587



HI 4588



HI 4589

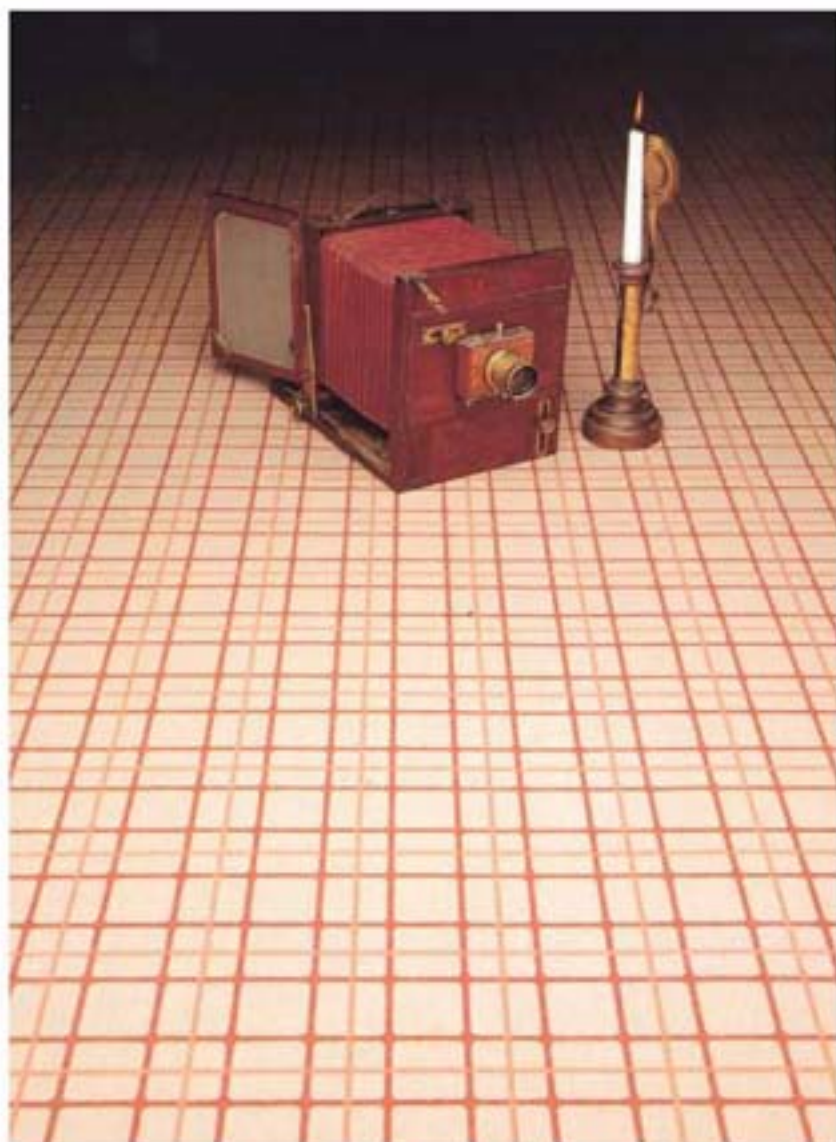






# Des. HOPE

PATTERN REPEAT:  
width cm 10 long cm 10,7



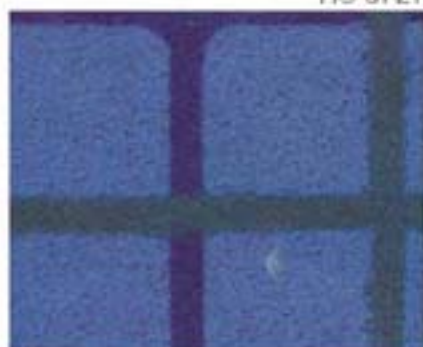
HO 9721



HO 9722



HO 9723



HO 9724



HO 9725



HO 9726







PATTERN REPEAT:  
width cm 1 long cm 1



01 9780



01 9781



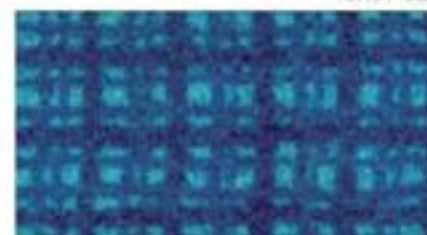
01 9782



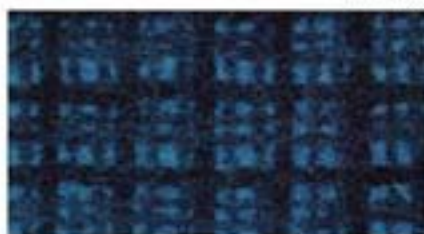
01 9783



01 9784



01 9785



01 9786



01 9787



01 9788



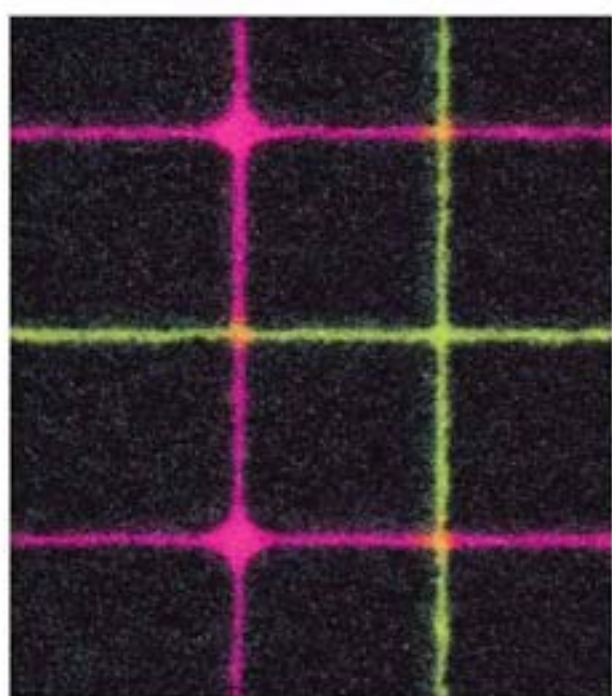
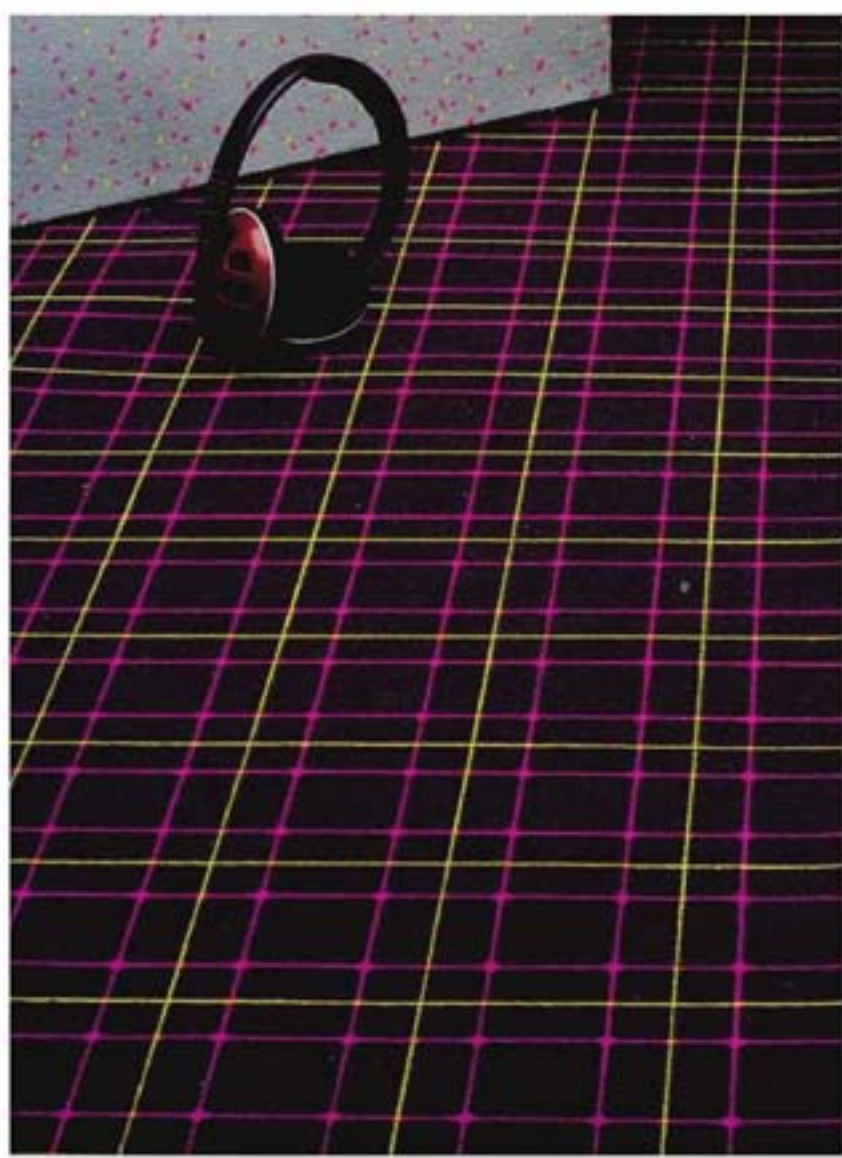


scale 1:1

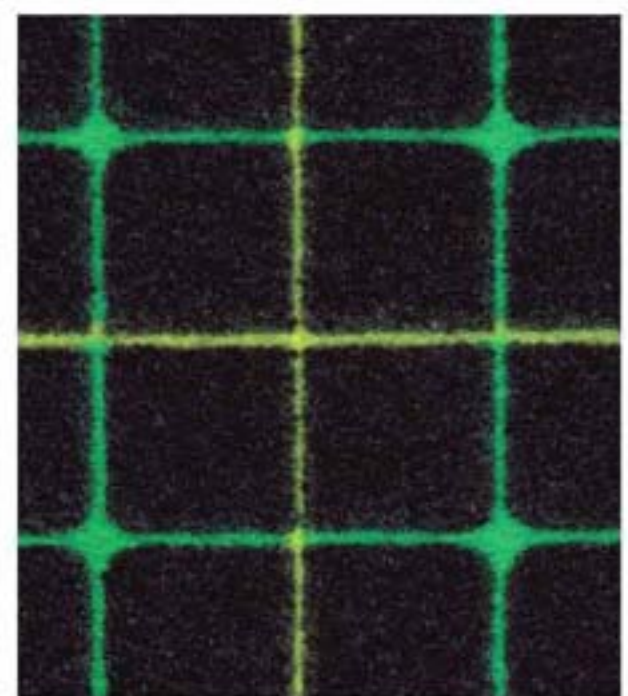


# Des. LASER

*PATTERN REPEAT:*  
width cm 10,7 long cm 10,6



LS 9701



LS 9702

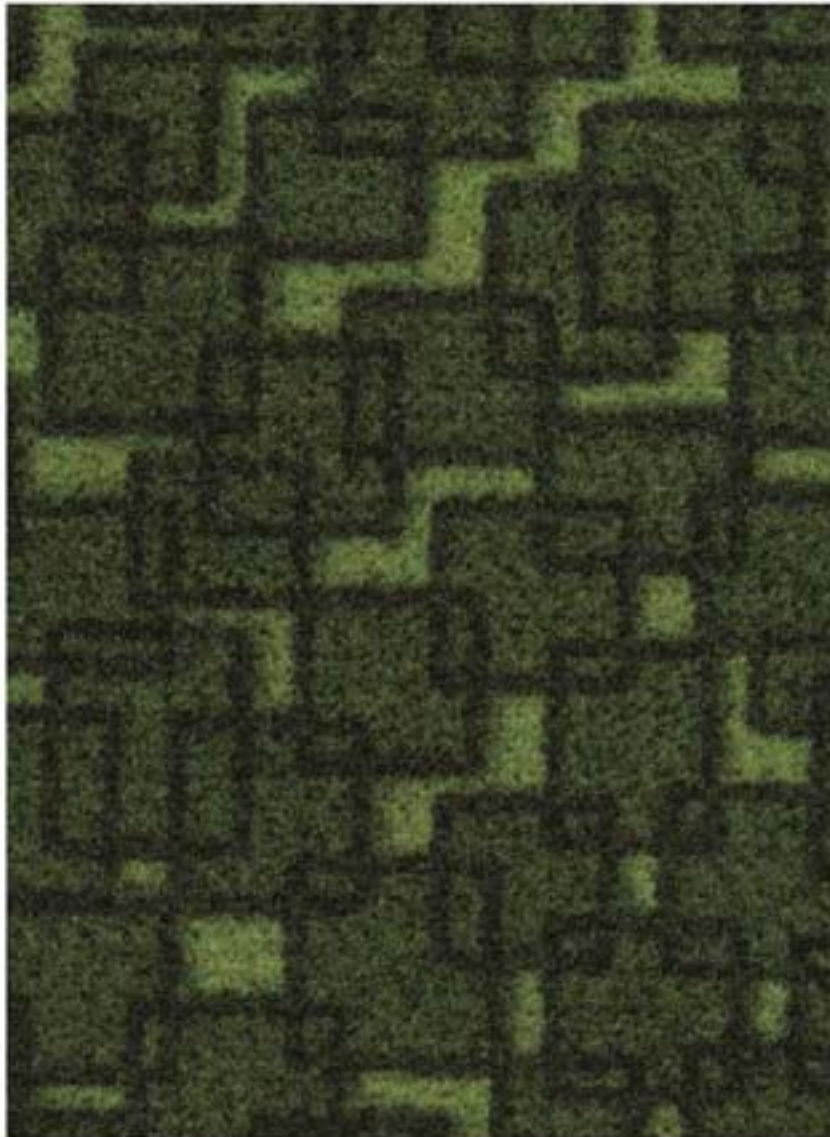






# Des. MOSAICO

PATTERN REPEAT:  
width cm 50 long cm 32



MI 8089



MI 8090



MI 8091



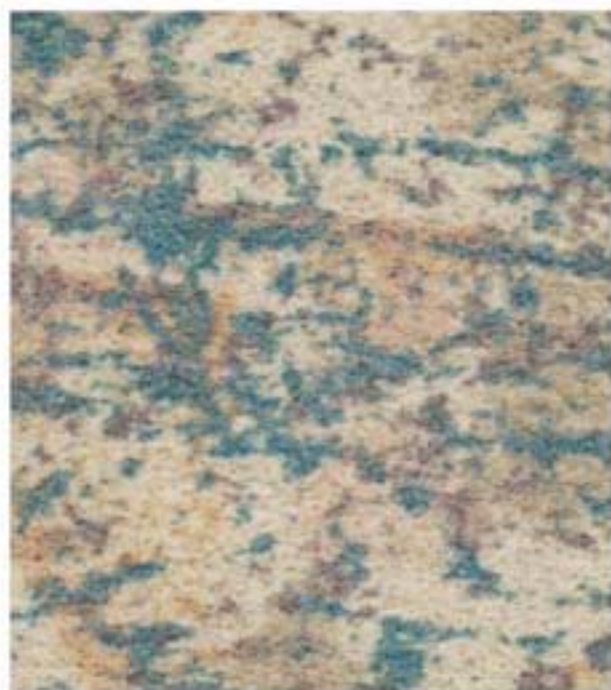


scale 1:1

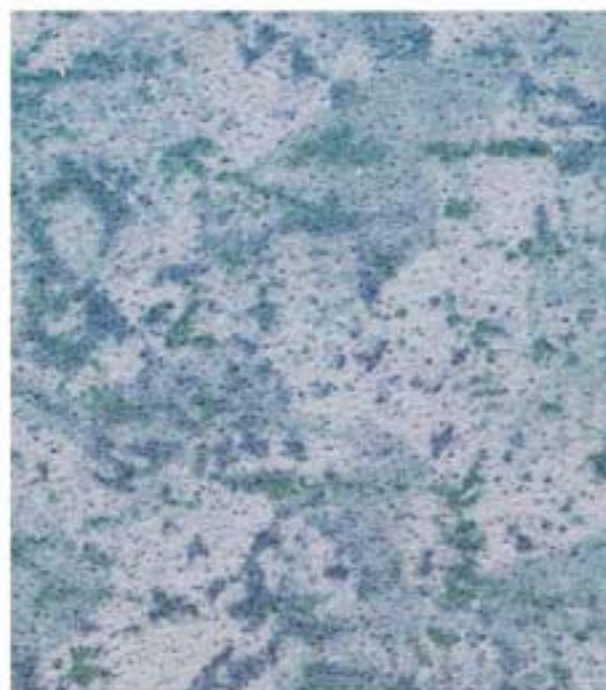


# Des. MOSS

*PATTERN REPEAT:*  
width cm 50 long cm 32



MS 9711



MS 9712





scale 1:1



# Des. NOBLE

*PATTERN REPEAT:*  
width cm 4 long cm 4



NO 9717



NO 9718



NO 9719



NO 9720



NO 9721





scale 1:1



PATTERN REPEAT:  
width cm 16 long cm 16,6



FS 9665



FS 9666



FS 9667



FS 9668



FS 9669





scale 1:1



# Des. PEPITA

*PATTERN REPEAT:*  
width cm 6,4 long cm 6,4



PT 9623



PT 9624



PT 9625



PT 9626





scale 1:1



# Des. QUEEN

PATTERN REPEAT:  
width cm 32 long cm 25



0Q 9705



0Q 9706



0Q 9707



0Q 9708





scale 1:1



# Des. SPIKE

*PATTERN REPEAT:*  
width cm 8 long cm 8



SK 9789



SK 9790



SK 9791



SK 9792

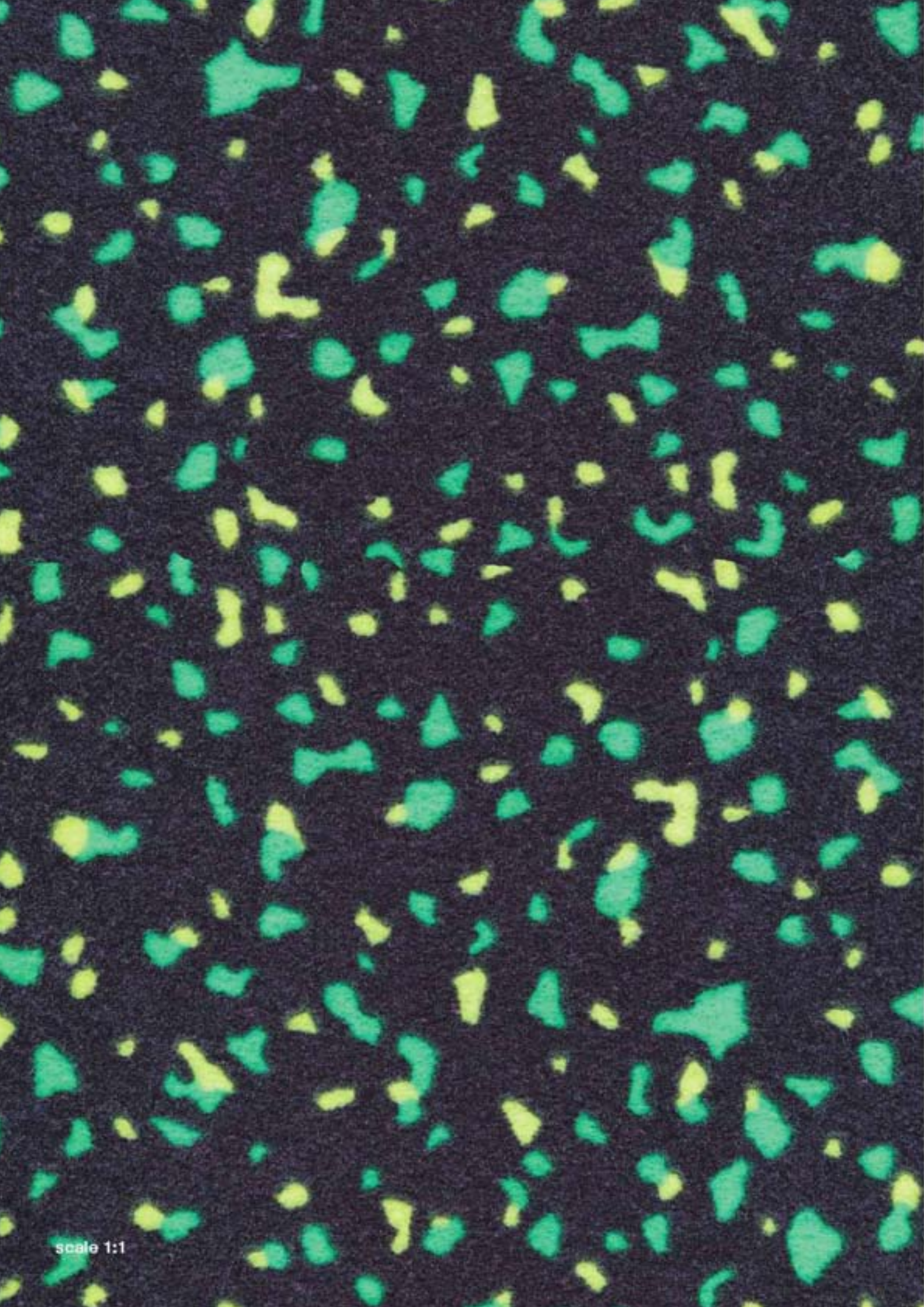


SK 9793



SK 9794



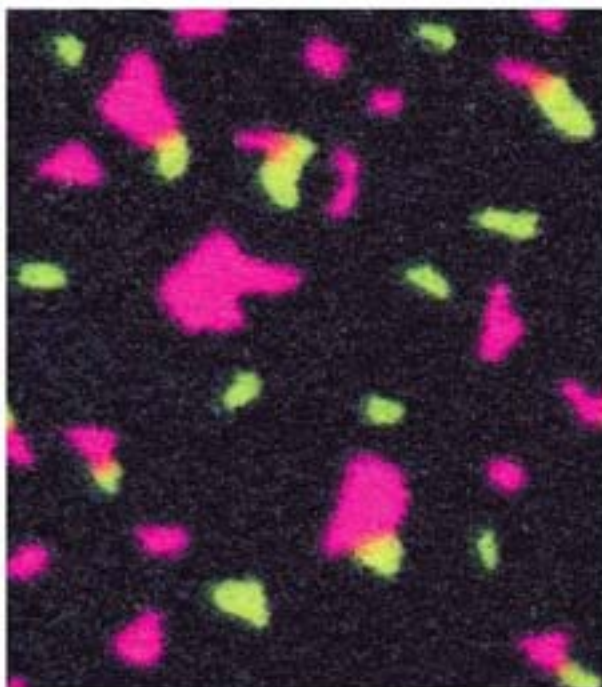
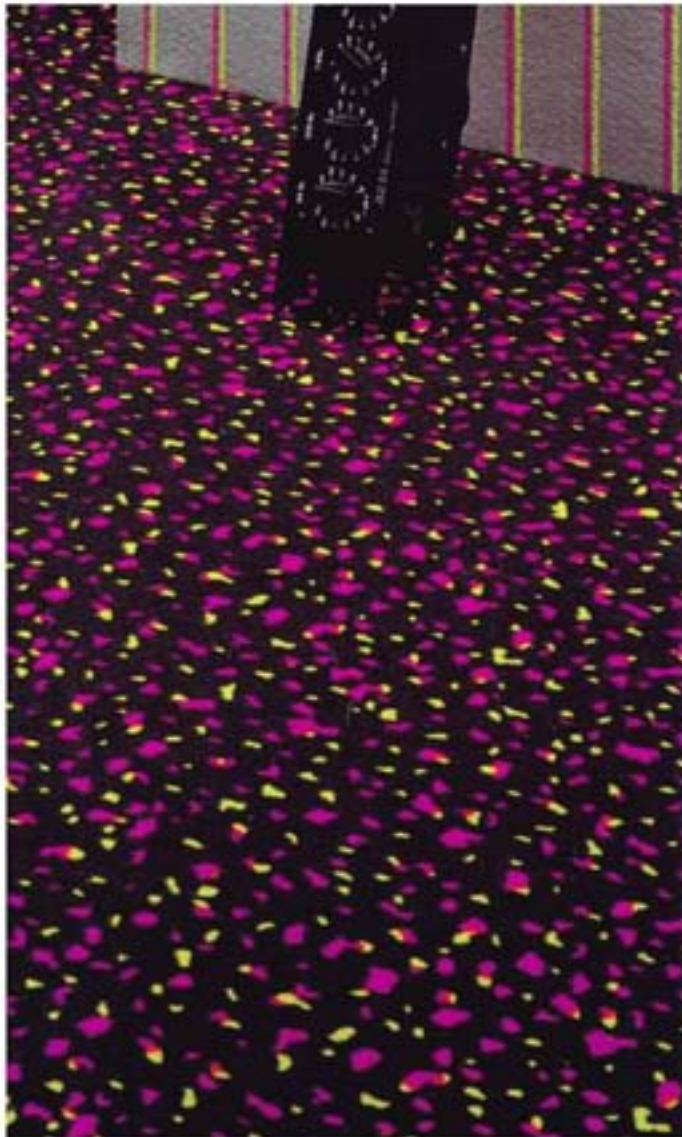


scale 1:1

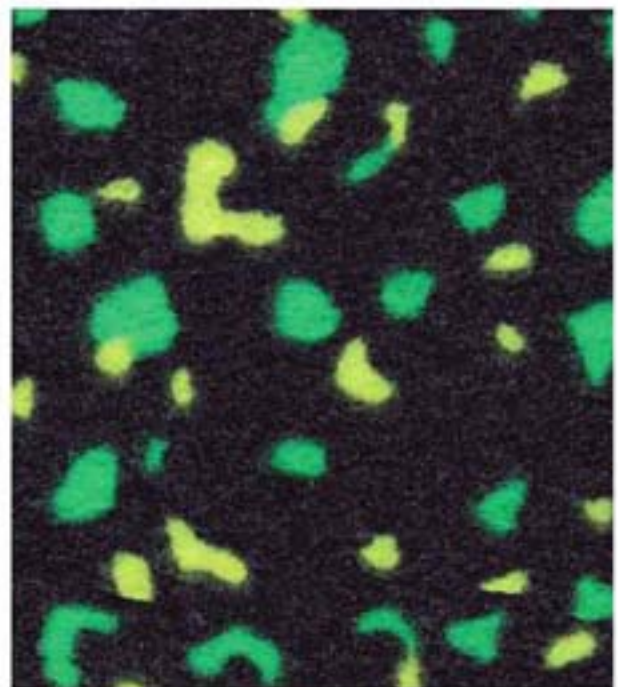


# Des. SPOT

*PATTERN REPEAT:  
width cm 21,3 long cm 36,5*

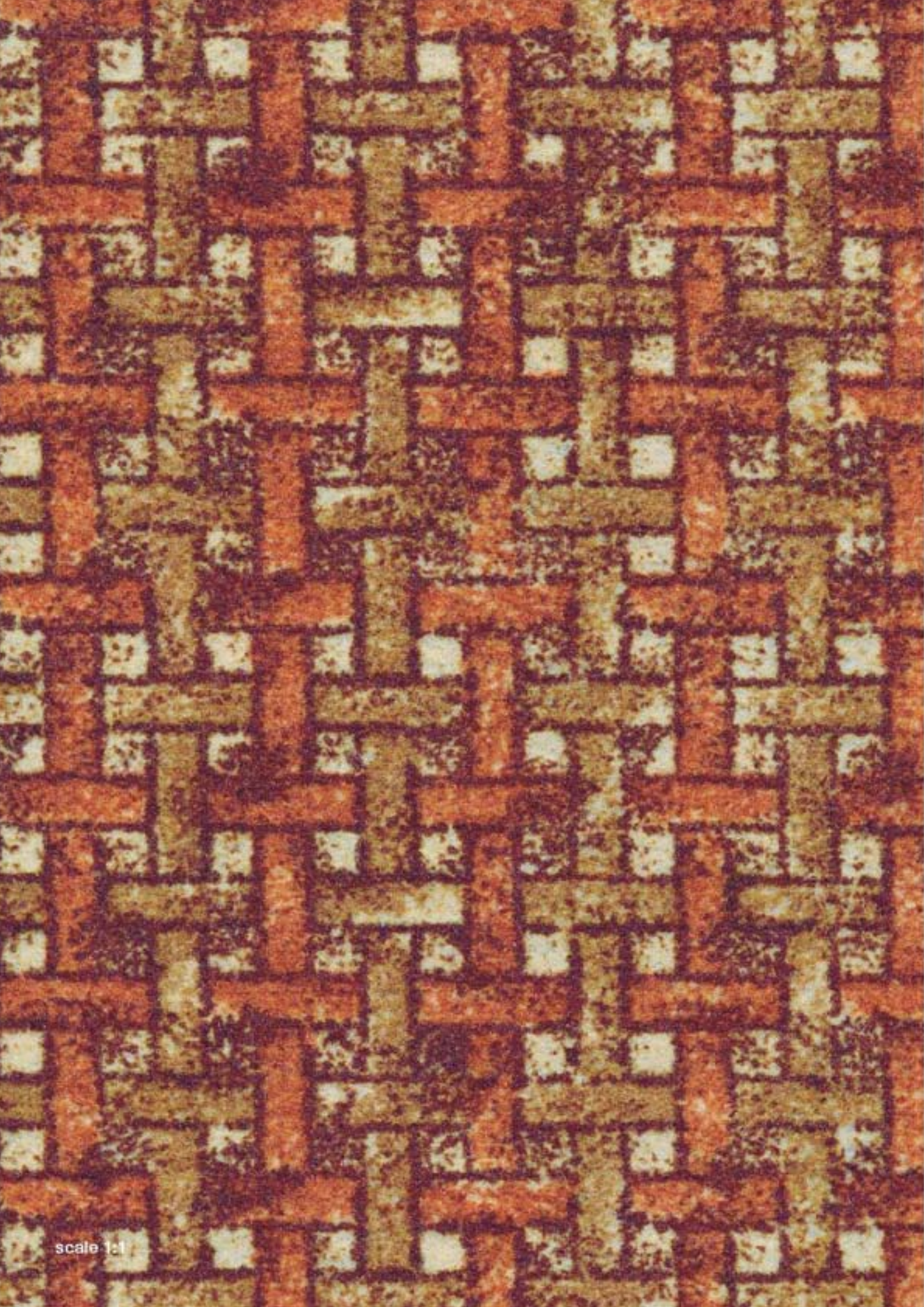


SP 9703



SP 9704





scale 1:1



*PATTERN REPEAT:  
width cm 25 long cm 12,8*



SR 7477



SR 7478



SR 7479



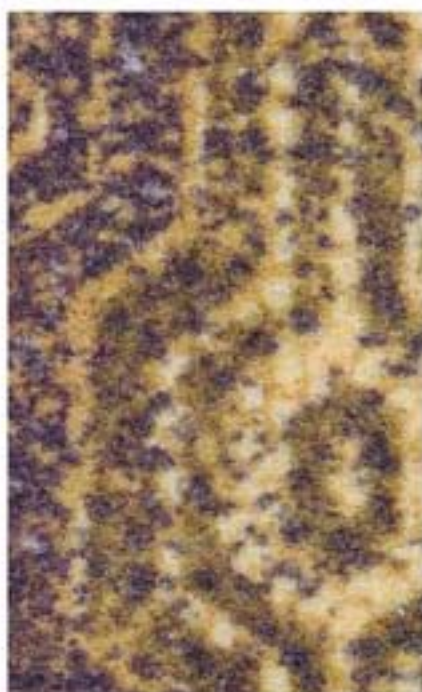


scale 1:1



# Des. TIFFANY

*PATTERN REPEAT:*  
width cm 21,3 long cm 22,2



TI 7351



TI 7352



TI 7353



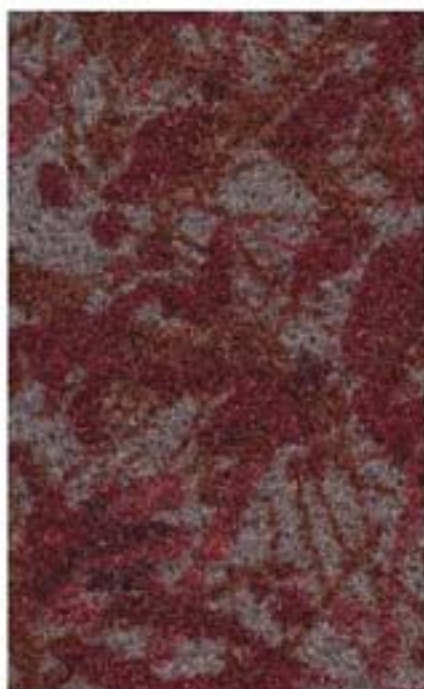


scale 1:1



# Des. WIND

*PATTERN REPEAT:*  
width cm 20 long cm 21,33



WI 1130



WI 1131



WI 1132





scale 1:1



# Des. ASTER

*PATTERN REPEAT:*  
width cm 6,40 long cm 6,44



AE 8401



AE 8402



AE 8403



AE 8404



AE 8405

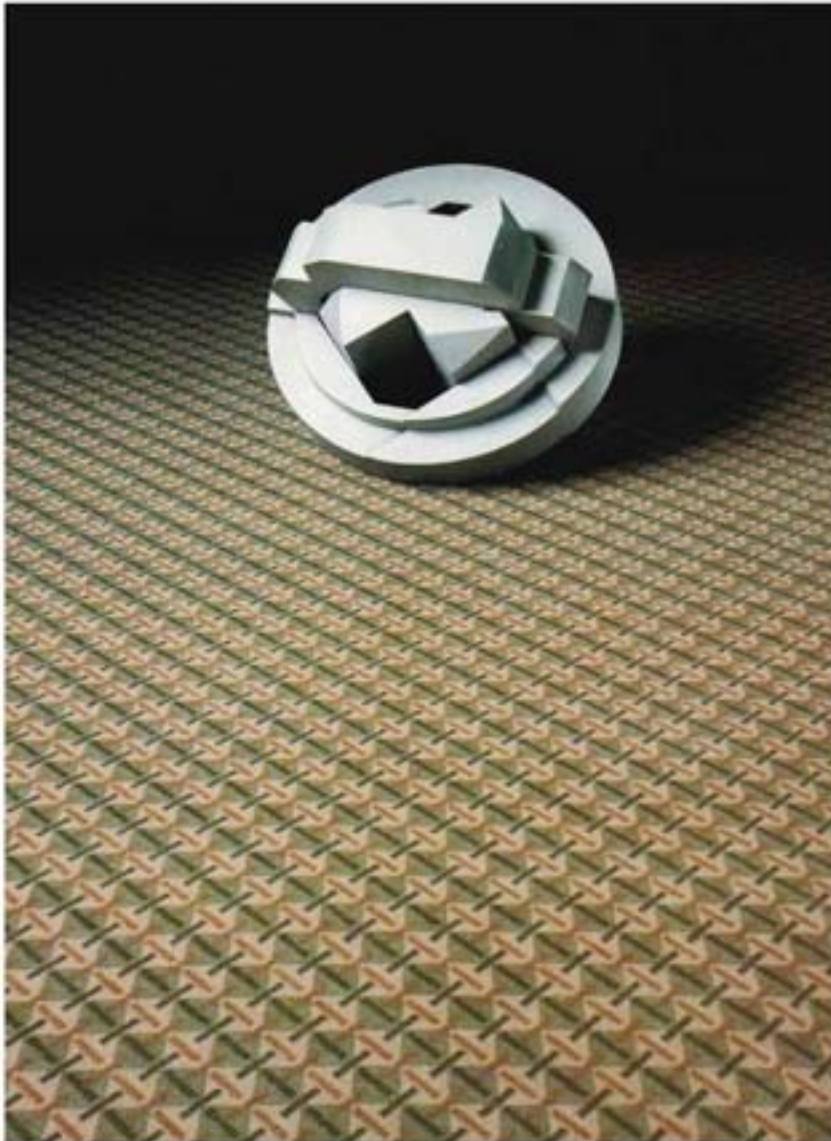




scale 1:1



*PATTERN REPEAT:*  
width cm 6,40 long cm 6,44



CS 8501



CS 8502



CS 8503

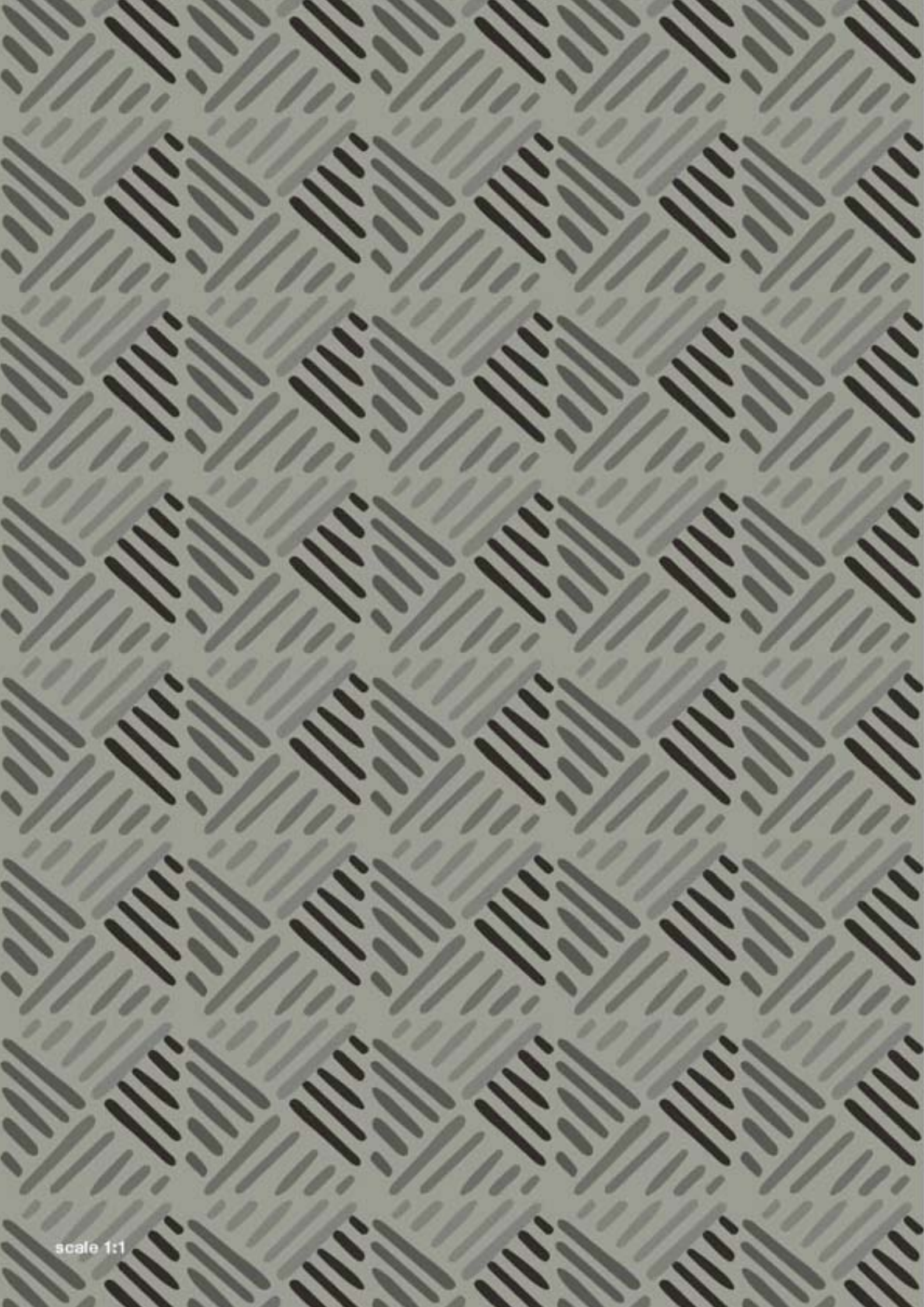


CS 8504



CS 8505





scale 1:1



PATTERN REPEAT:  
width cm 4 long cm 4



scale 1:1



DI 9723



DI 9724



DI 9725



DI 9726



DI 9727



DI 9728



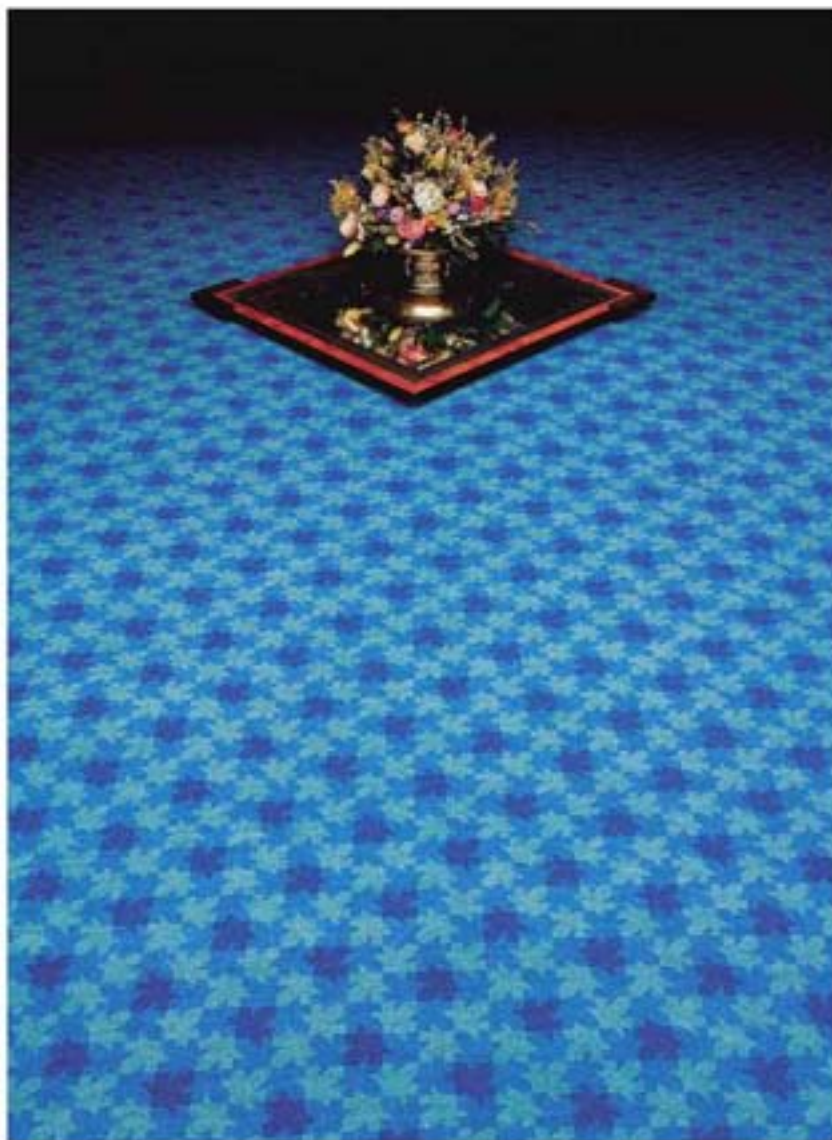


scale 1:1

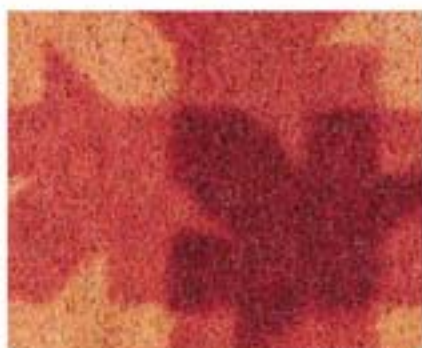


# Des. FRESH

PATTERN REPEAT:  
width cm 20 long cm 21,33



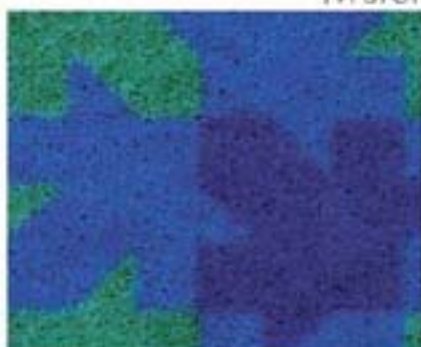
FR 9731



FR 9732



FR 9733



FR 9734



FR 9735



FR 9736



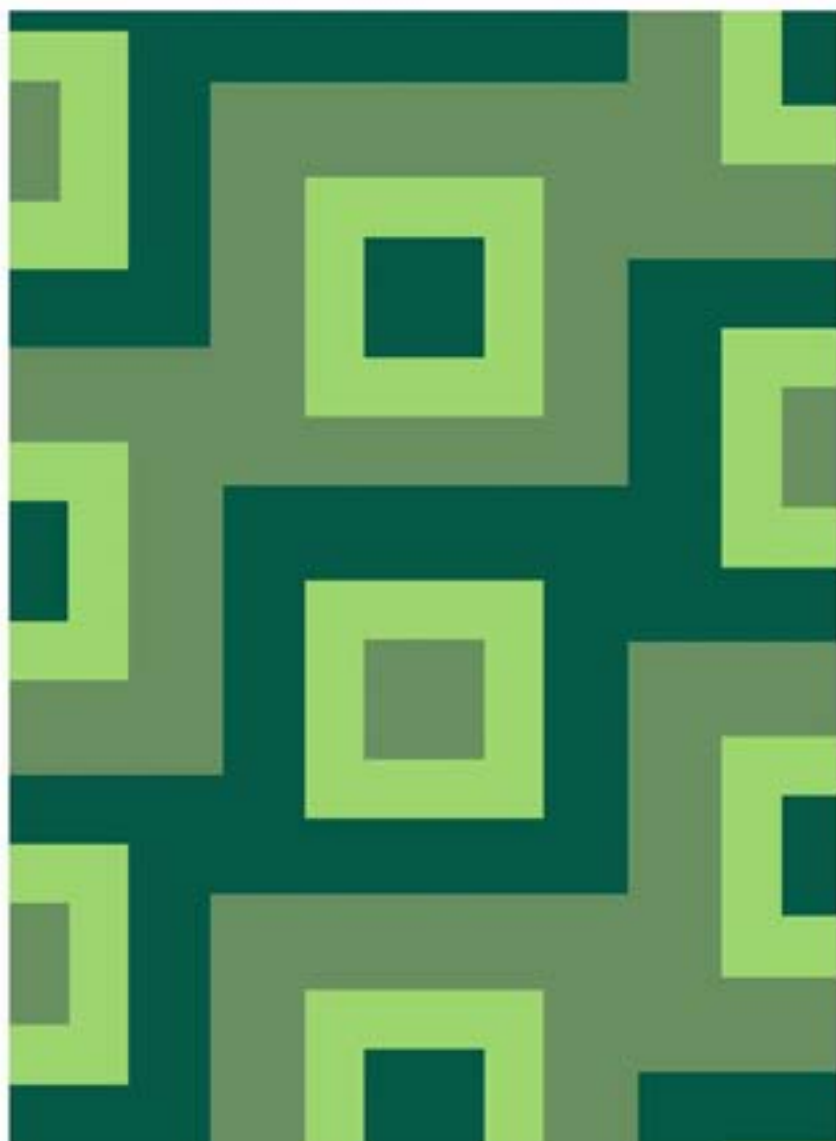


scale 1:1



# Des. NOVI

*PATTERN REPEAT:*  
width cm 10,7 long cm 22,1



NV 9728



NV 9729



NV 9730







# Des. RASTER 1123

PATTERN REPEAT:  
width cm 3 long cm 3



RA 9501



RA 9502



RA 9503



RA 9504



RA 9505







PATTERN REPEAT:  
width cm 3 long cm 3



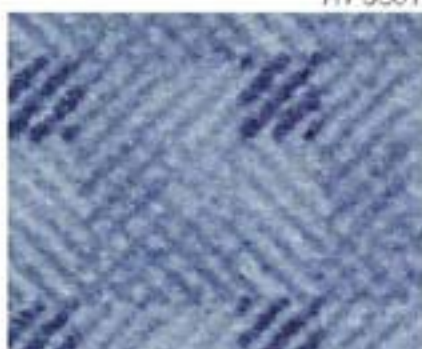
FT 9501



FT 9502



FT 9503



FT 9504



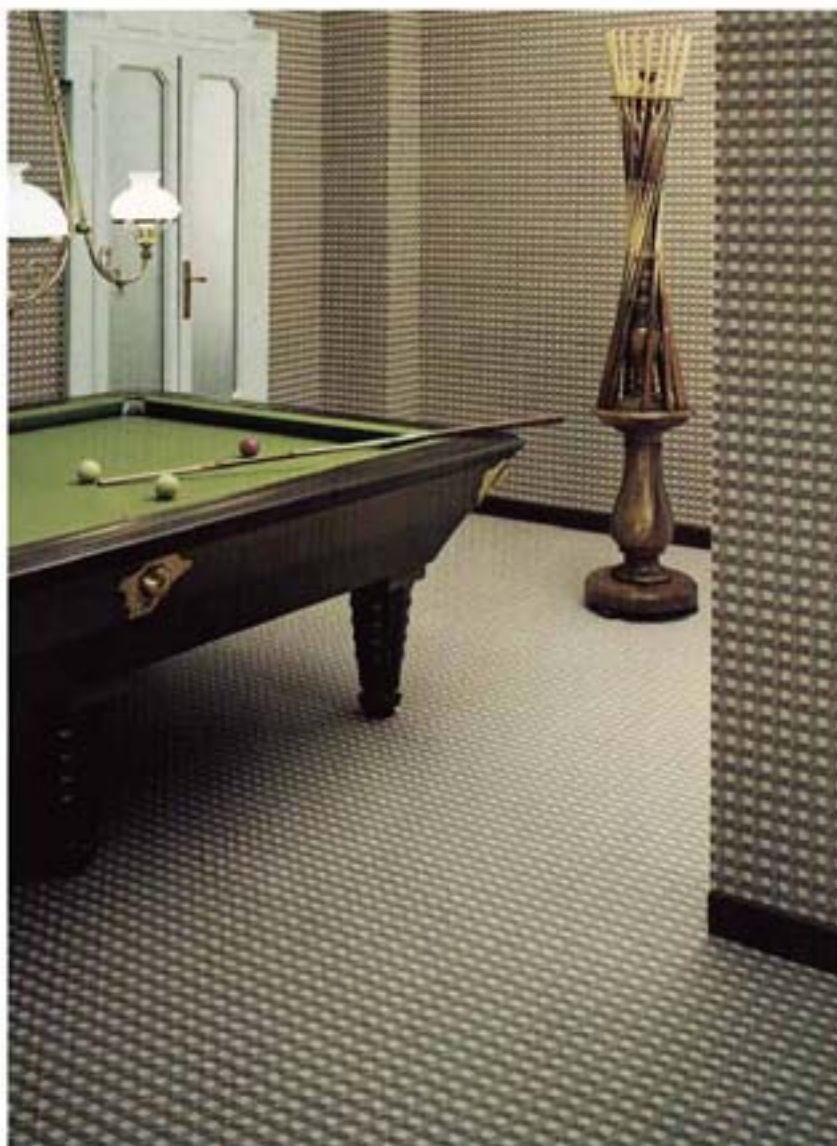
FT 9505







*PATTERN REPEAT:*  
width cm 4 long cm 4



CR 9746



CR 9747



CR 9748



CR 9749





scale 1:1



# Des. ARMONIA

*PATTERN REPEAT:*  
width cm 50 long cm 32



AR 9130



AR 9132



AR 9137





scale 1:1



PATTERN REPEAT:  
width cm 32 long cm 33,3



GR 9670



GR 9671

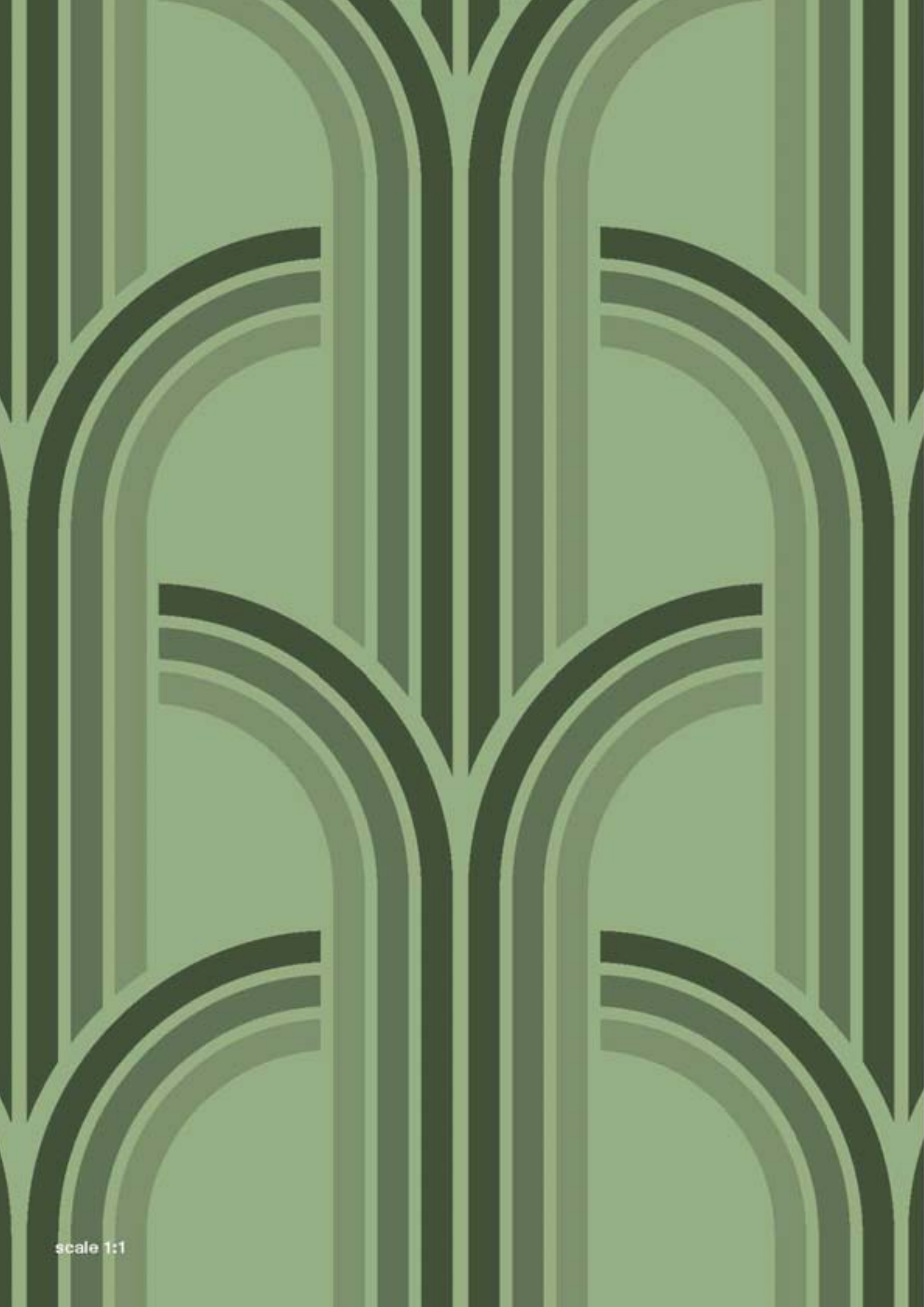


GR 9672



GR 9673





scale 1:1



# Des. LOTUS

*PATTERN REPEAT:*  
width cm 50 long cm 64



LM 9762



LM 9763



LM 9764







*PATTERN REPEAT:*  
width cm 7,1 long cm 7,4



BU 7127

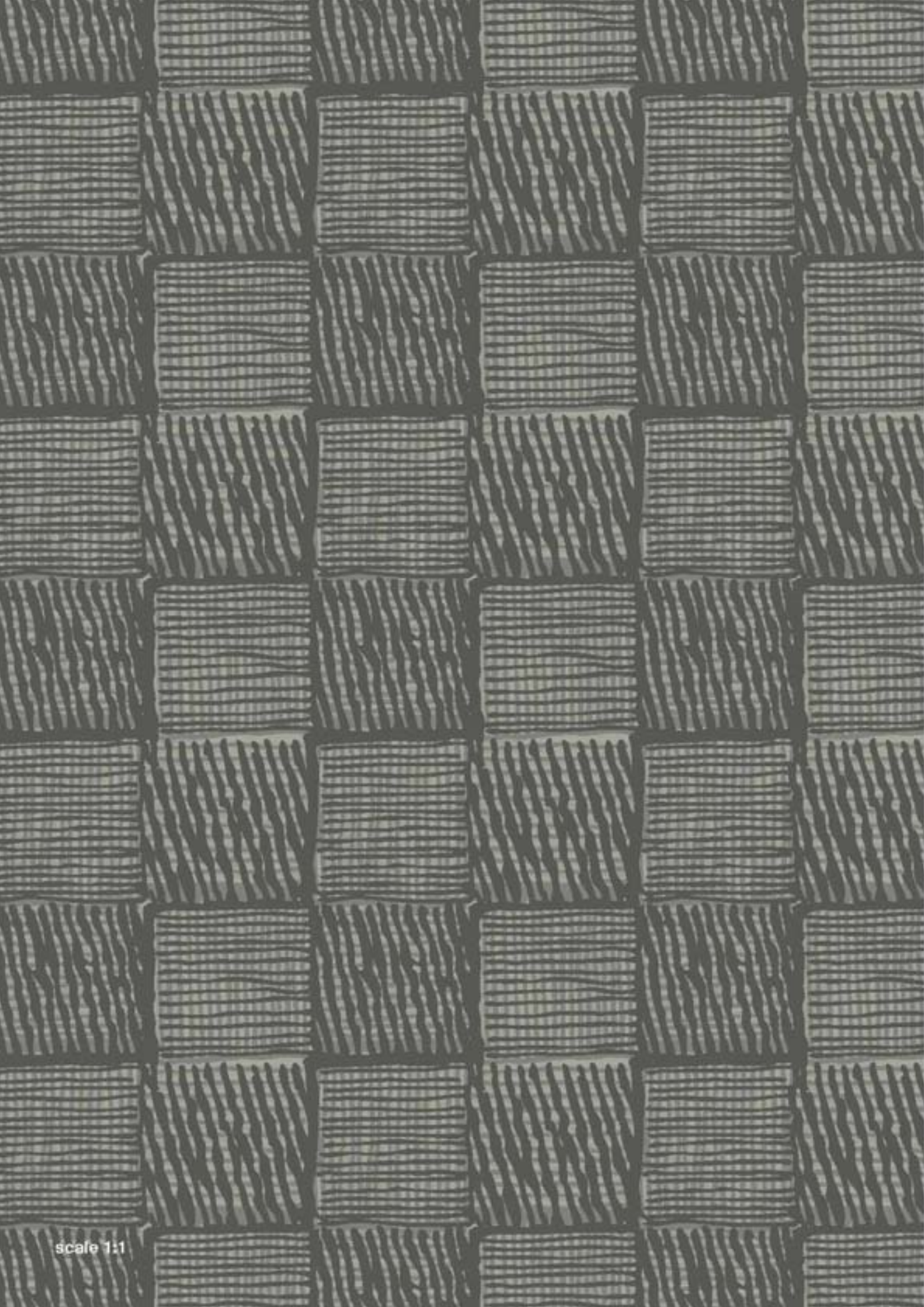


BU 7128



BU 7126



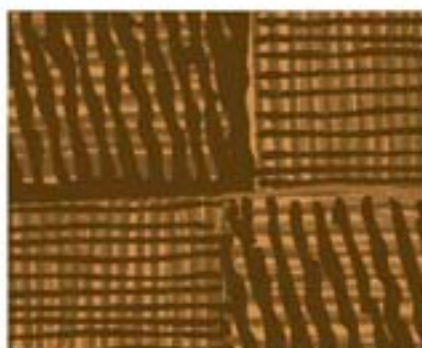


scale 1:1



# Des. CANVAS

*PATTERN REPEAT:*  
width cm 8 long cm 8



CA 9693



CA 9694



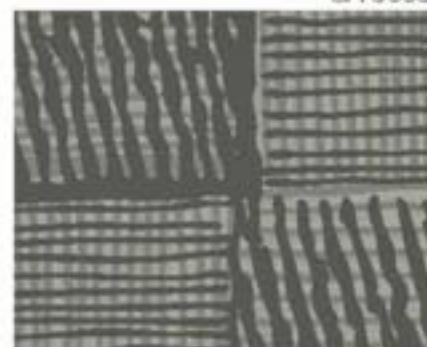
CA 9695



CA 9696



CA 9697



CA 9698

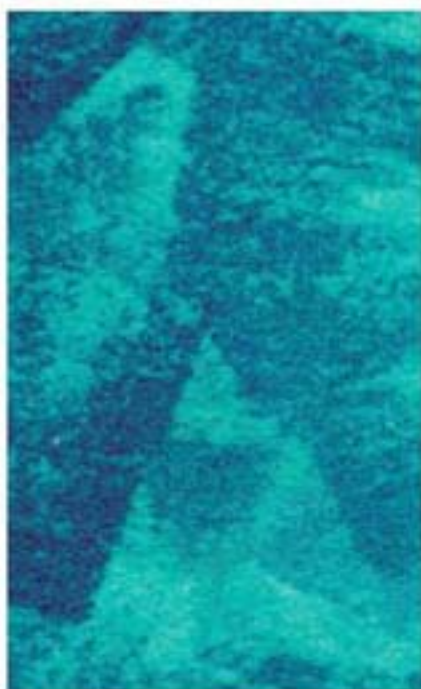




scale 1:1



PATTERN REPEAT:  
width cm 50 long cm 32



CH 9776



CH 9777



CH 9778

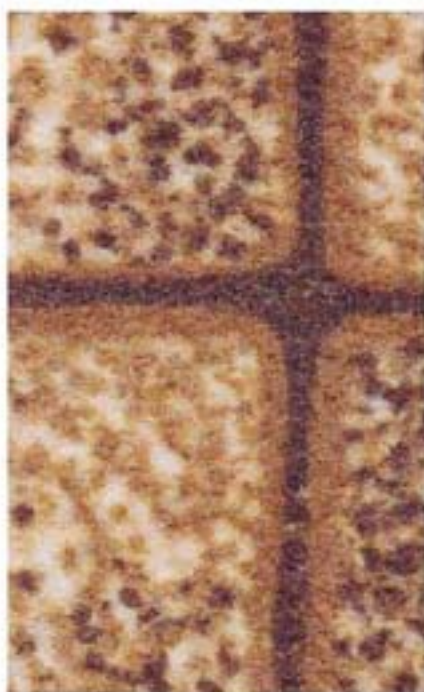




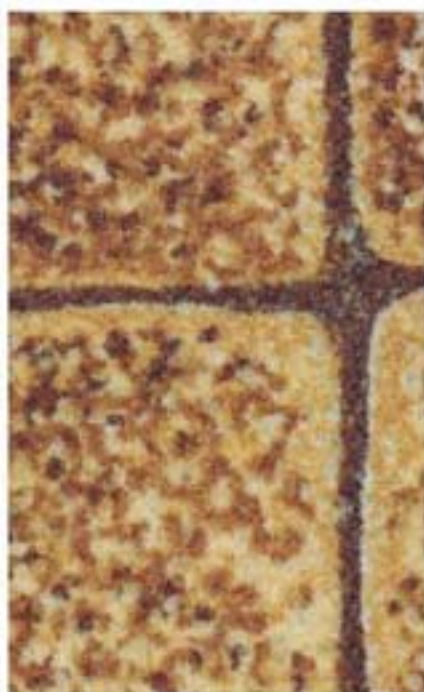
scale 1:1



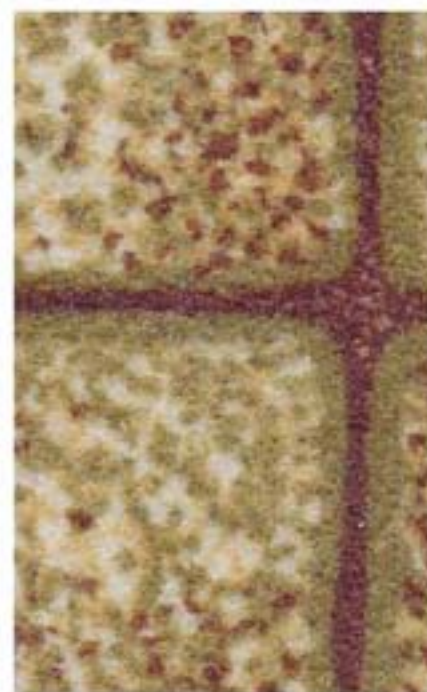
*PATTERN REPEAT:*  
width cm 32 long cm 33,3



MN 7272



MN 7273



MN 7274

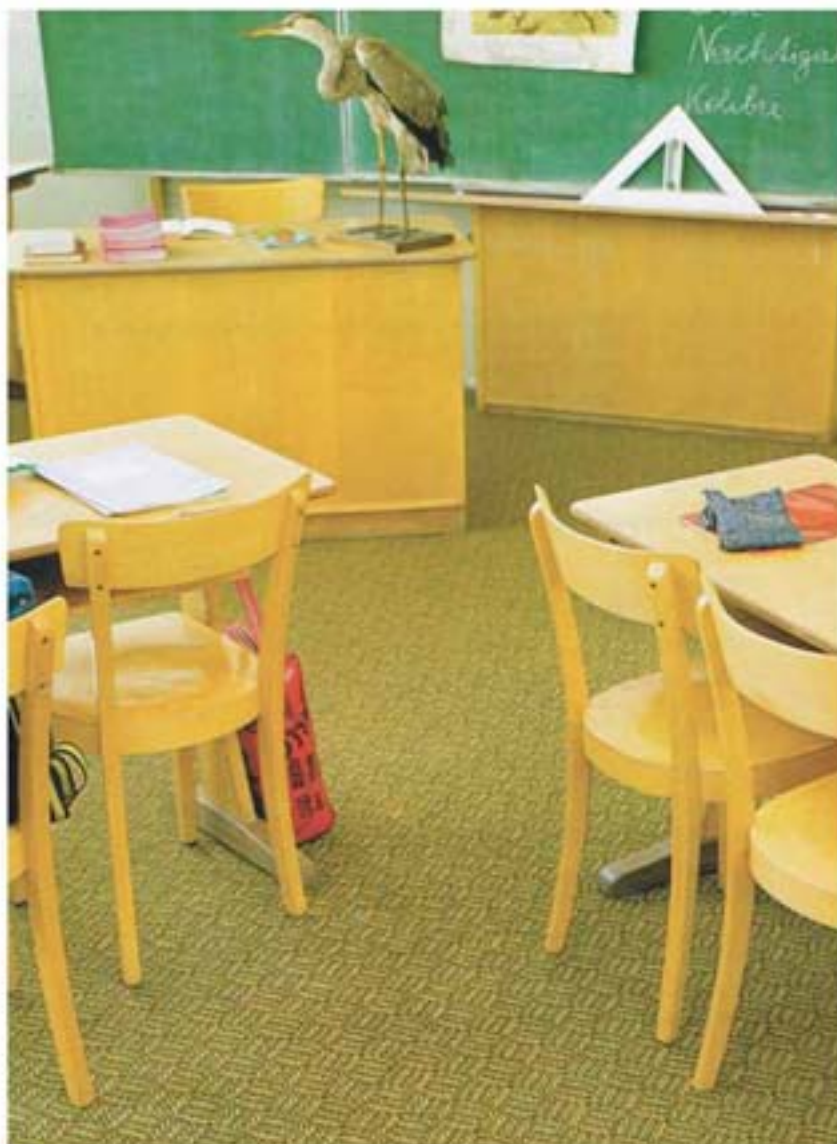




scale 1:1



PATTERN REPEAT:  
width cm 12,8 long cm 25



SY 7326



SY 7327



SY 7328

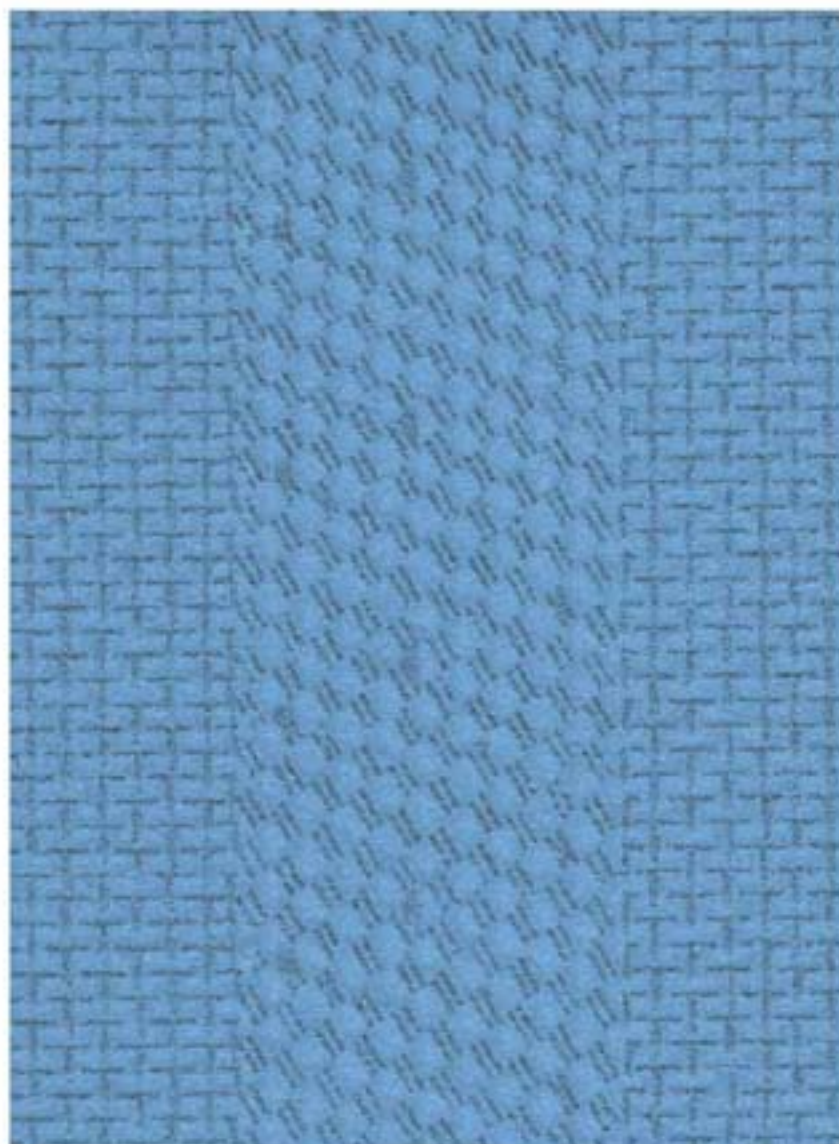






# Des. STRIPED

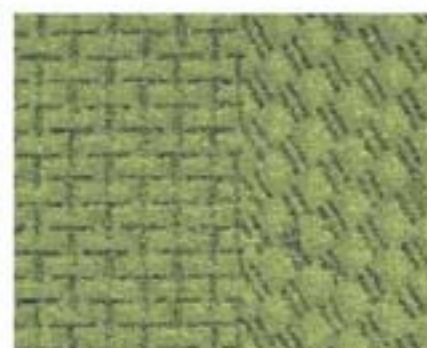
PATTERN REPEAT:  
width cm 10 long cm 1



SD 9795



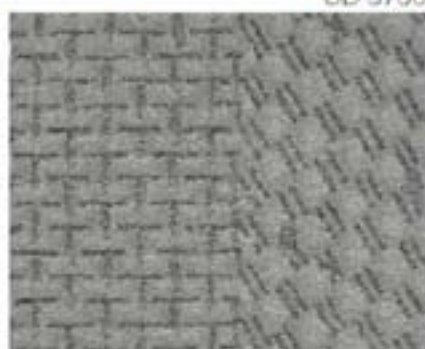
SD 9796



SD 9797



SD 9798



SD 9799







*PATTERN REPEAT:*  
width cm 50 long cm 32



SU 7480



SU 7481



SU 7482



SU 7483



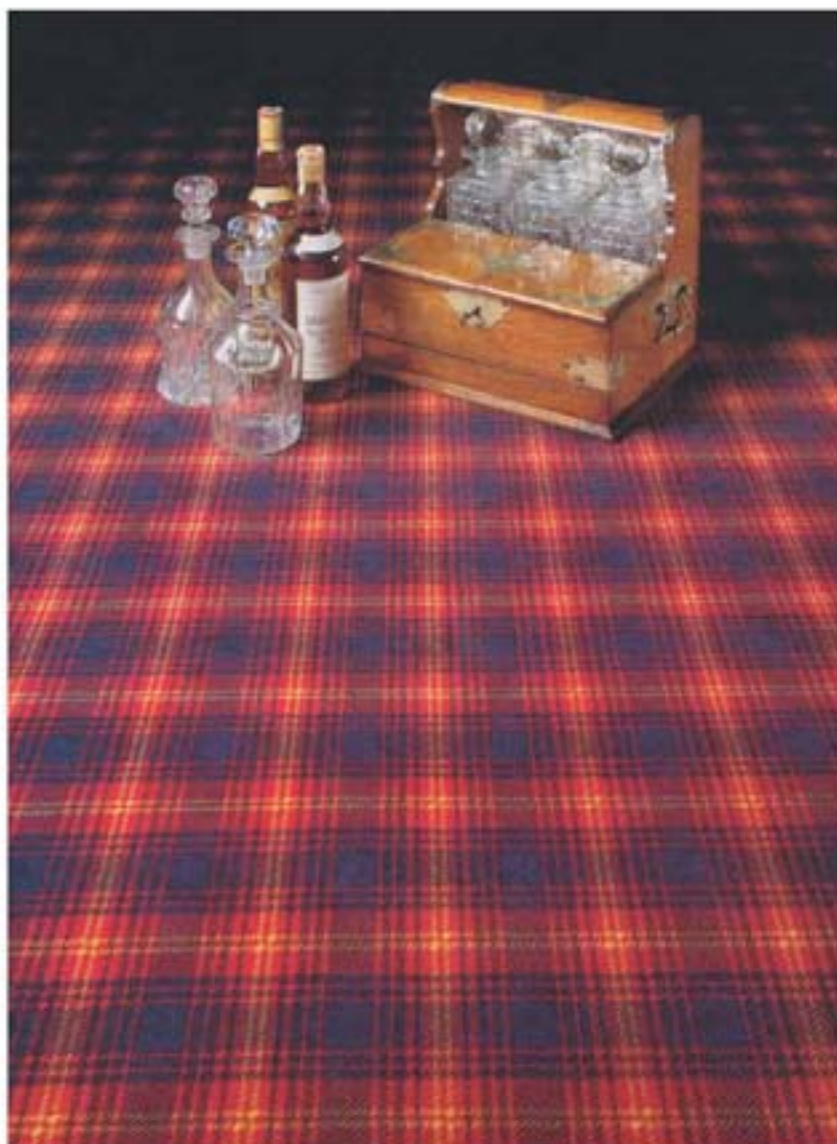


scale 1:1

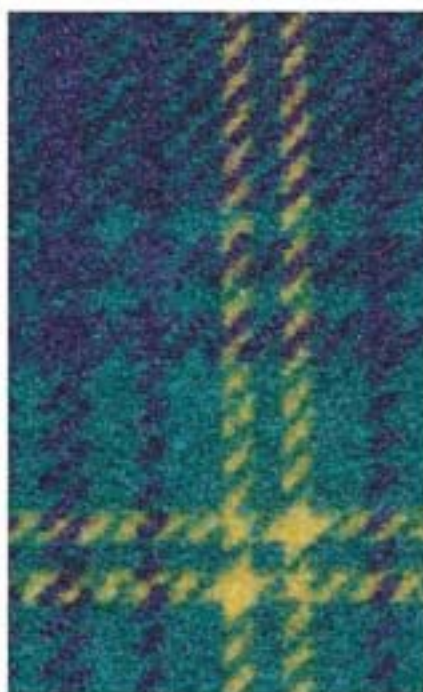


# Des. TARTAN

*PATTERN REPEAT:*  
width cm 12,8 long cm 11,8



TA 8101



TA 8102



TA 8103





scale 1:1



PATTERN REPEAT:  
width cm 7,1 long cm 28,5



TR 7336



TR 7337



TR 7338



TR 7339





## Caratteristiche Tecniche

QUALITÀ

VERSIONE

DESCRIZIONE

COMPOSIZIONE:

- Strato d'usura 1,5 mm
- Substrato 2,0 mm
  
- Supporto 1,0 mm
- Antisporco
- Batteriostatico e micostatico

PESO

SPESSORE

PESO SPECIFICO

ALTEZZA

NORMATIVA EUROPEA EN-1470:

- Logoramento
- Idoneità per scale
- Idoneità sedie a rotelle
- Caratteristiche antistatiche
- Comfort al calpestio
- Propagazione suono
- Assorbimento acustico

REAZIONE AL FUOCO

IGIENE

POSA

ECO-SOSTENIBILITÀ

FLOORDESIGN® COLL.

Visione ideale  
per ambienti sanitari  
AXS

AXA

Pavimento resiliente a basso peso specifico con superficie liscia compatta e decorata

Polimero PA 6.6 estruso  
 Polimero PES estruso  
 Copolimero SBR-X in soluzione acquosa  
 Resine ACR in soluzione acquosa  
 Gomma naturale gofrata  
 Resine Fluorocarboniche (Teflon®)  
 Isothiazolinone/Halogenated Phenoxy (Sanitized®)

gr.1,600 /m<sup>2</sup>

gr.1,000 /m<sup>2</sup>

mm 4,5

mm 3,5

gr 0,350

gr 0,290

m 2

Classe 4 - Resistenza estrema  
 Uso intensivo  
 Uso intensivo  
 Antistatico con carico estremamente basso  
 Alto 25 dB | Medio 21 dB  
 Alle medie frequenze (Hz) 0,20 a

Secondo norma EN 13501 - 1  
 Classificazione Bfl - s1  
 Marchio - CE

Permanentemente Antibatterico  
 (non necessita di trattamenti con disinfettanti)

Totalmente incollato

Materiale riciclato 25%  
 (Poliestere da bottiglie)  
 Materie prime naturali 24% (Lattice di gomma)  
 Riutilizzo dopo l'uso 100%





## Technical Specifications

QUALITY

VERSION

DESCRIPTION

COMPOSITION:

- wear layer 1,5 mm
- Sublayer 2,0 mm
  
- Backing 1,0 mm
- Antisoiling
- Bacteriostatic and Fungistatic:

WEIGHT

THICKNESS

SPECIFIC WEIGHT

WIDTH

EUROPEAN STANDARD EN-1470:

- Wear
- Suitability for stairs
- Suitability for wheelchairs
- Anti-static properties
- Tread comfort
- Sound propagation
- Sound absorption

FIRE RESISTANCE

HYGIENE

INSTALLATION

ECO-SUSTAINABILITY

FLOORDESIGN® COLL.

Ideal version  
for healthcare environments  
AXS

AXA

Resilient flooring with low specific weight, smooth, compact and patterned surface

PA 6.6 Extruded polymer  
PES Extruded polymer  
SBR-X Copolymer in water solution  
ACR Resins in water solution  
Natural foam  
Fluorocarbon Resins (Teflon®)  
Isothiazolinone/Halogenated Phenoxy (Sanitized®)

gr.1,600 /m<sup>2</sup>

gr.1,000 /m<sup>2</sup>

mm 4,5

mm 3,5

gr 0,350

gr 0,350

m 2

Class 4 - Extreme resistance  
Intensive use  
Intensive use  
Anti-static with extremely low cad  
High  
25 dB  
To medium frequencies (Hz) 0,20 α

Medium  
21 dB

According to standard EN 13501 - 1  
Classification Bfl - s1  
CE - brand

Permanently Antibacterial  
(no need to treat with disinfectants)

Fully glued

-25% Recycled material  
(Polyester from bottles)  
-24% Natural raw materials (Foam latex)  
-100% Re-use after usage





**PREGO NOTARE:** i colori riprodotti in questo catalogo sono accurati tanto quanto lo permette il processo di stampa su carta.



**PLEASE NOTE:** the colours reproduced in this catalogue are as the printing on paper allows.







**TECNOFLOOR®**

INDUSTRIA CHIMICA

**TECNOFLOOR** s.r.l.  
59100 Prato - Italy - via De Amicis, 1  
tel. +39.0574.4991 fax +39.0574.499280  
[www.tecnofloor.net](http://www.tecnofloor.net) e-mail: [info@tecnofloor.net](mailto:info@tecnofloor.net)